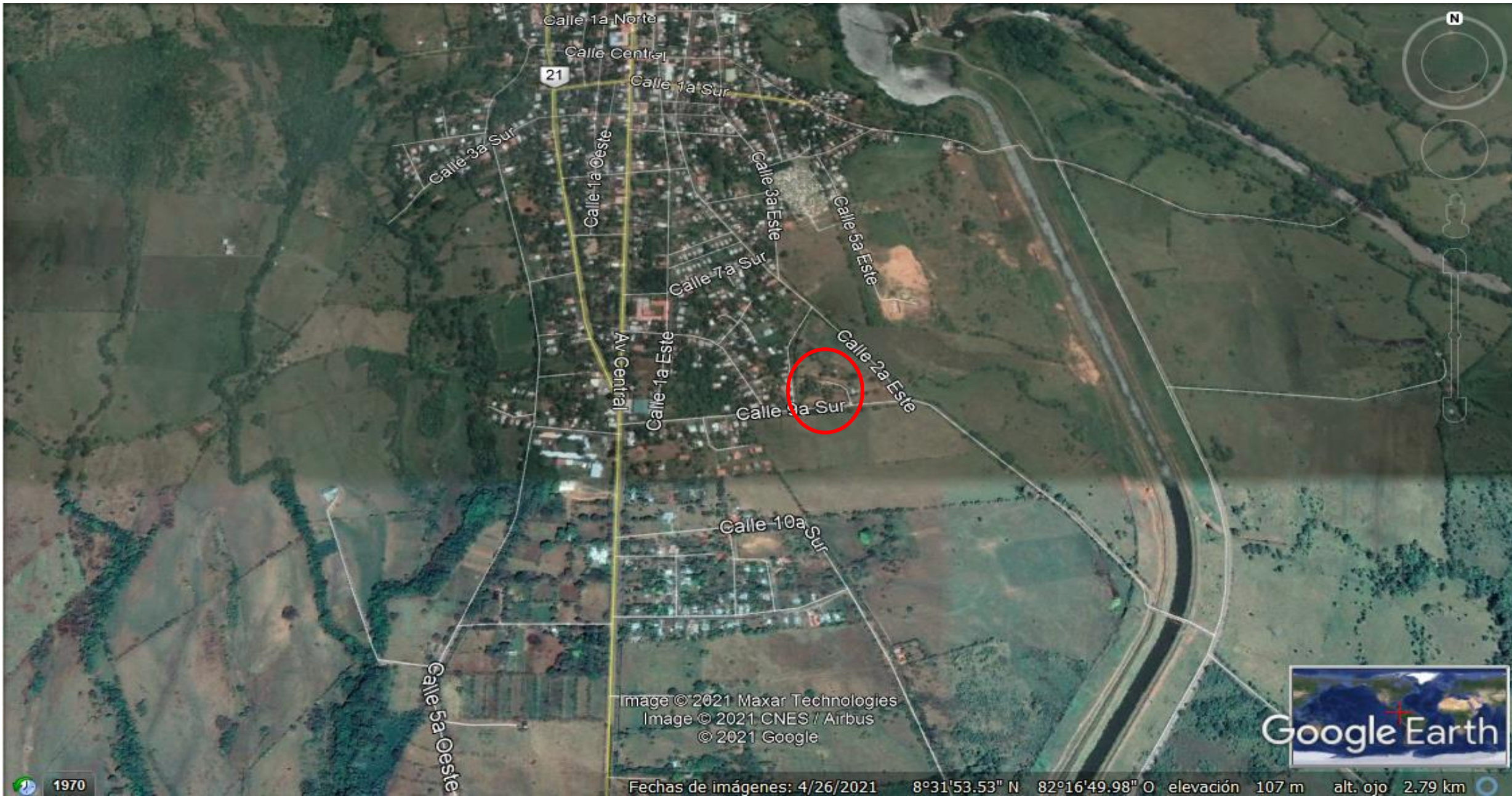




santaelenapanama

Property in Santa Elena Gualaca





Calle 1a Norte

Calle Central

Calle 1a Sur

Calle 3a Sur

Calle 1a Oeste

Calle 3a Este

Calle 5a Este

Calle 7a Sur

Av Central

Calle 1a Este

Calle 9a Sur

Calle 2a Este

Calle 10a Sur

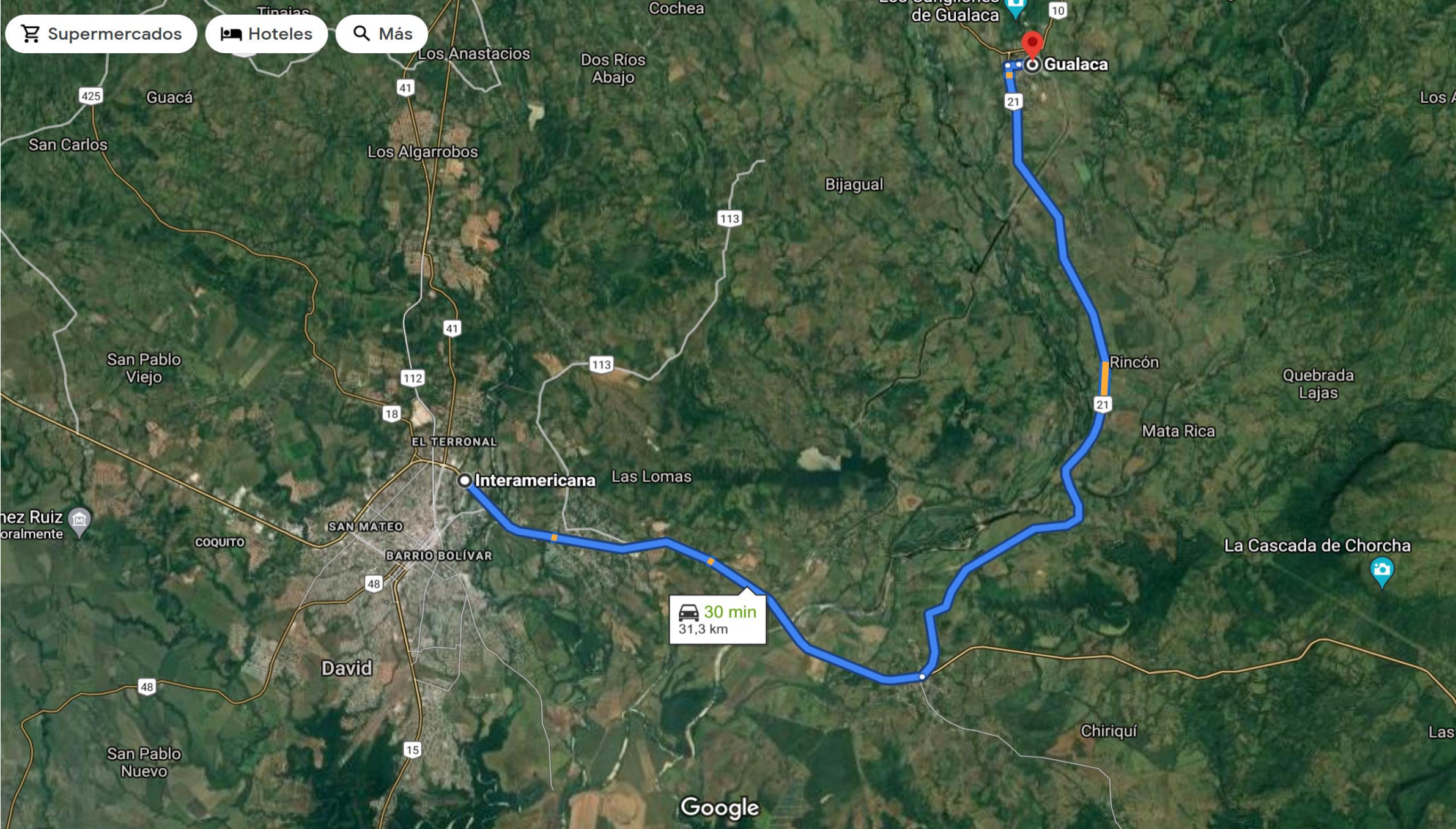
Calle 5a Oeste

Image © 2021 Maxar Technologies
Image © 2021 CNES / Airbus
© 2021 Google



1970

Fechas de imágenes: 4/26/2021 8°31'53.53" N 82°16'49.98" O elevación 107 m alt. ojo 2.79 km



Supermercados

Hoteles

Más

Gualaca

Interamericana

30 min
31,3 km

Google

WONDERFUL !!! Cabin with perimeter natural fence.

- 1000m2 of land, in a nice country zone, located 30 minutes from David Dow town.
- 75m2 of constructed area, 2 Floors, 3 bedrooms (2 in ground floor and 1 in the 2nd floor), 1 baths, wide living and dining room, wood kitchen with granite top.
- The house has 3 terraces, 2 on the 2nd floor and one in the ground floor.
- Big room in the second floor.
- BBQ area at the back of 1000 m2 ideal for family meetings or celebrations area
- Water reserve system of 2500 liters, with an automatic pump and a shelter.
- Nice environments, large gardens, tall trees and good shade that provides an always pleasant climate.
- **Rent: US\$ 450 / Monthly**

UPCOMING JOBS

- Automatic Gate at the main entrance
- Garage









NOTE 8 PRO
CAMERA

2020/12





NOTE 8 PRO
CAMERA