

THE TIDES

AT PLAYA CARACOL



GRUPO
LOS PUEBLOS



PANAMA
CITY.
PANAMA.



PLAYA CARACOL

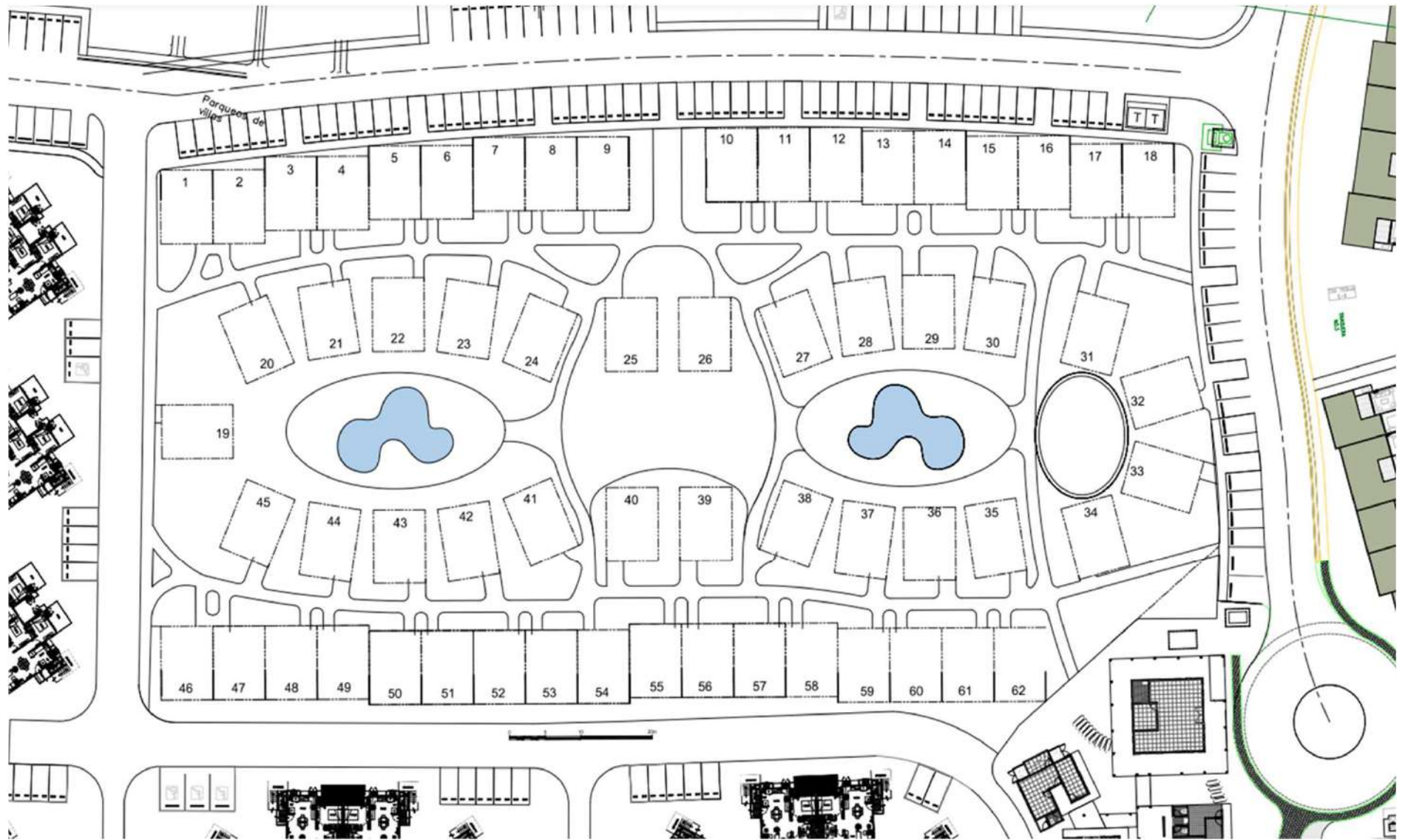
Punta Chame, Panamá Oeste



PROYECTO DE DISEÑO: INSTITUTO DE INGENIERIA HERRERA & ASOCIADOS, S. A.

1:1000 (1"=100'-0")

EMA
Ingenieros, Arquitectos
Y SERVICIOS ASOCIADOS



THE TIDES – TOWN HOME | THA (2 recámaras)



GROUND FLOOR

AREAS ThA (m ²) ORIGINAL	
m ² Cerrados PB	43.19
m ² Cerrados PA	28.18
m ² Cerrados totales	71.37
m ² Abiertos PB	0.61
m ² Abiertos PA	11.00
m ² Abiertos totales	11.60
Total casa	82.98
m ² Patio	29.20
Gran total	112.18

AREAS (Sq. Ft.)	
Ground Floor:	464.95
Upper Floor:	303.35
Subtotal Enclosed:	768.27
Lobby Acces	6.51
Open Roof Terrace:	118.37
Total Open house	124.88
Total house	893.18
Backyard	314.31
Grand Total:	1207.49



UPPER FLOOR

THE TIDES – TOWN HOME | THB (3 recámaras)



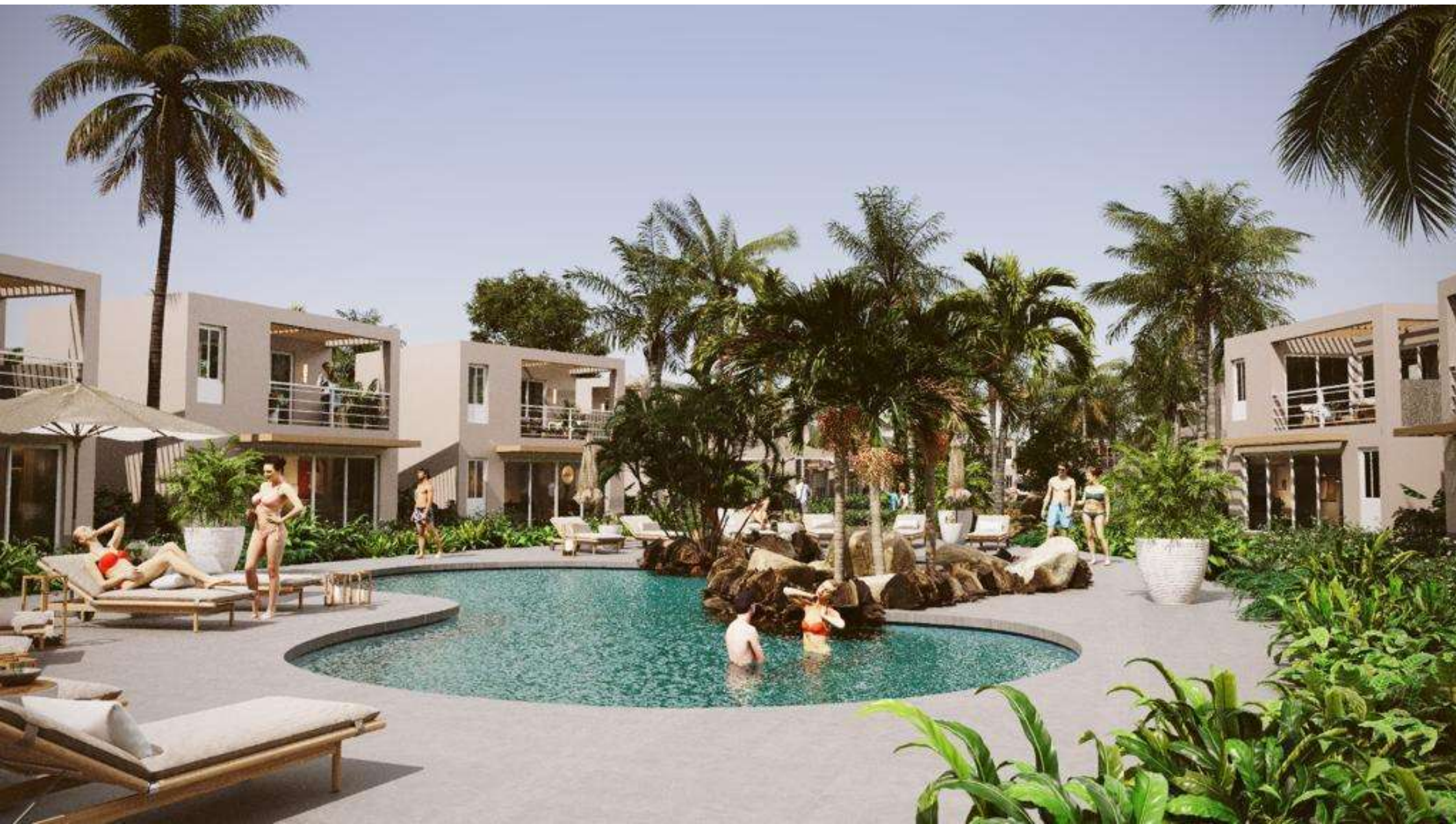
GROUND FLOOR

AREAS ThA (m²) VERSION 2	
m² Cerrados PB	43.19
m² Cerrados PA	39.18
m² Cerrados totales	82.37
m² Abiertos PB	0.61
m² Abiertos PA	0.00
m² Abiertos totales	0.61
Total casa	82.98
m² Patio	29.20
Gran total	112.18

AREAS (Sq. Ft.)	
Ground Floor:	464.95
Upper Floor:	421.72
Subtotal Enclosed:	886.67
Lobby Acces.	6.51
Open Roof Terrace:	0.00
Total Open house	6.51
Total house	893.18
Backyard	314.31
Grand Total:	1207.49



UPPER FLOOR









BEACH CLUB

Floor Plan

Scale 1:100



0 1 2 5 10



Playa Caracol
BEACH RESORTS

GOMEZ VAZQUEZ INTERNATIONAL



All images used are for illustrative purposes only and are intended to convey the concept and vision for the development, all images and dimensions are not intended to form part any contract or warranty.


Playa Caracol

GOMEZ VAZQUEZ INTERNATIONAL




Playa Caracol

GOMEZ VAZQUEZ INTERNATIONAL

*All images used are for illustrative purposes only and are intended to convey the concept and vision for the development, all images and dimensions are not intended to form part any contract or warranty.