



VAN GOGH

# P.H. VAN GOGH

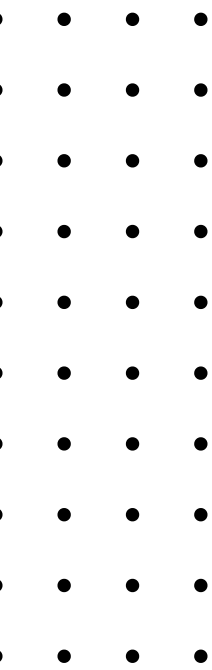
EL CANGREJO , PANAMA

SALA DE VENTAS 



## The Project

P.H. Van Gogh in Panama provides contemporary living opposite Panama University. Situated in El Cangrejo, at Panama City's core, it grants effortless Metro access for utmost convenience. These apartments boast modern design and superior construction, offering diverse layouts and top-notch amenity floors. Surrounded by shops and eateries, it's perfectly positioned in Panama's bustling hub, ideal for contemporary urban living.







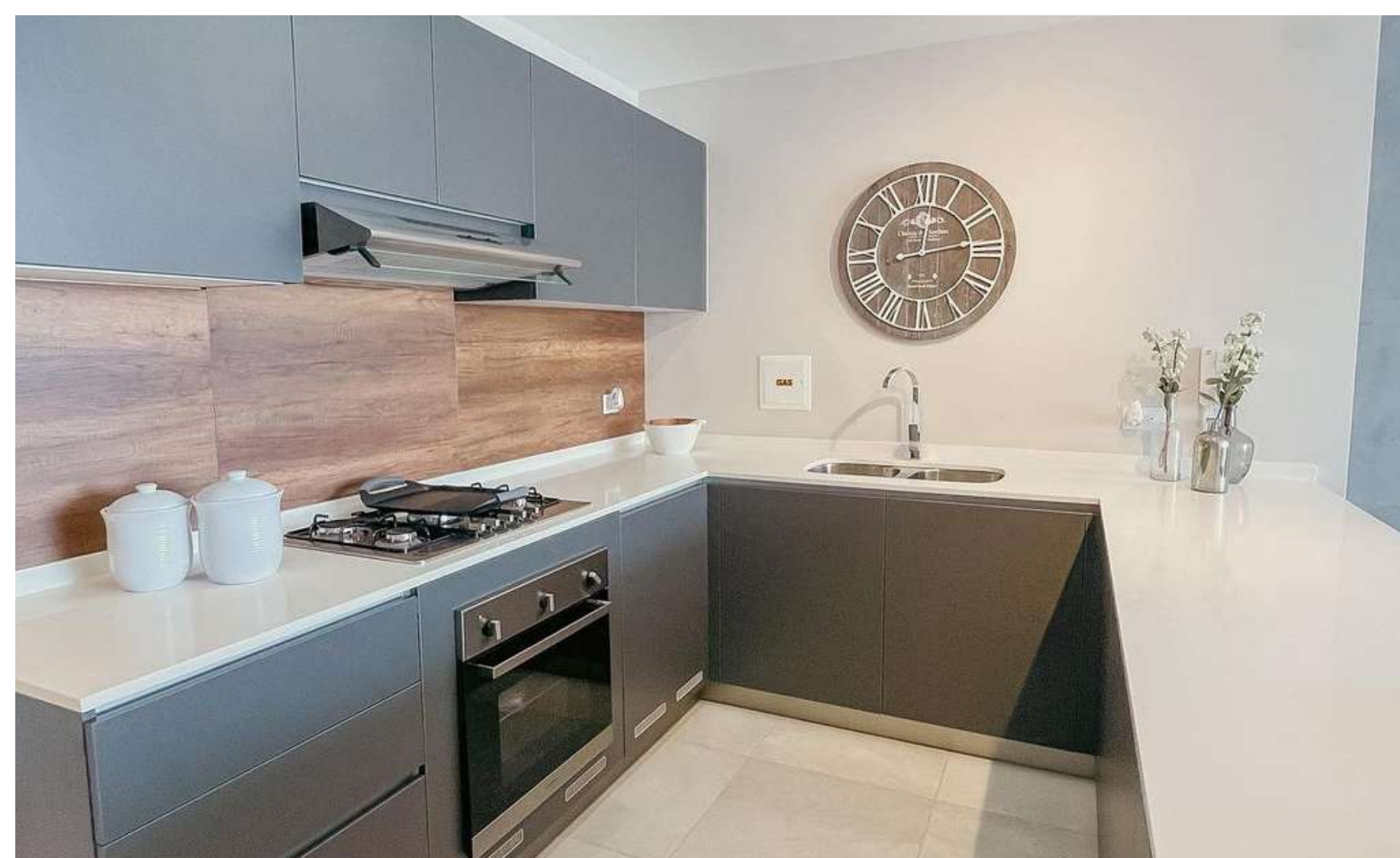
---

## **IMPRESSIONS**

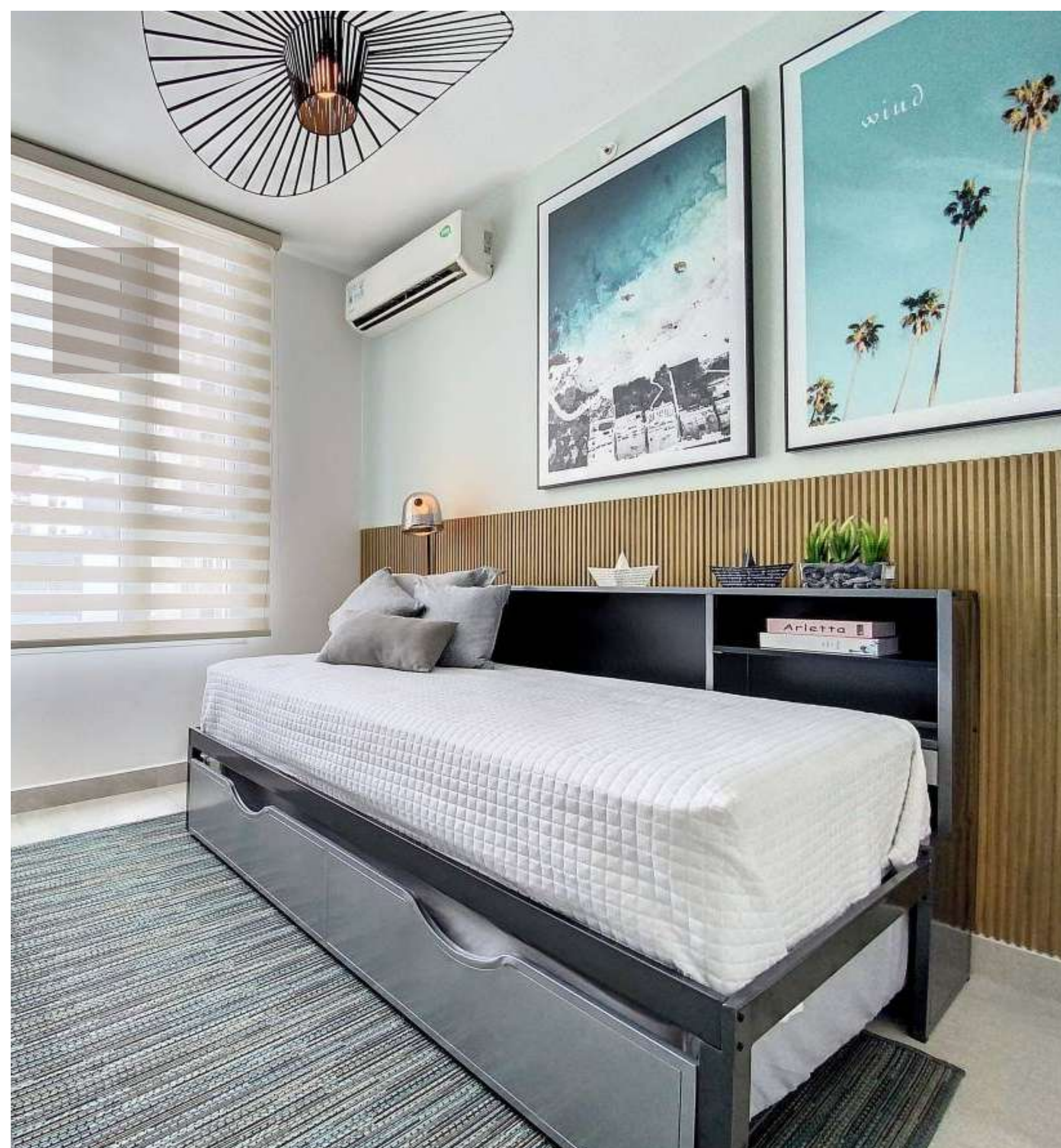
Featuring exceptional finishes and craftsmanship in every corner.

---











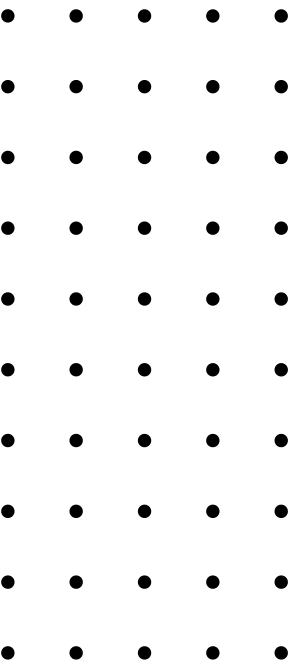






## Spacious, cozy living areas

Every unit offers ample space, perfect for individuals or small families.





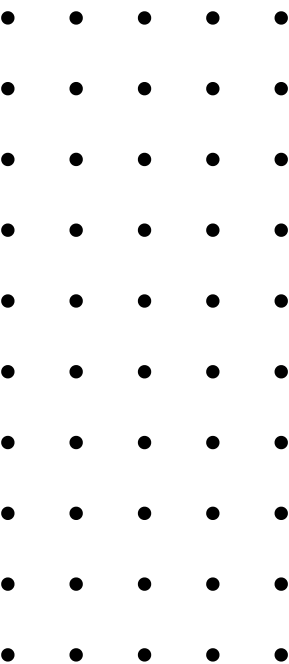






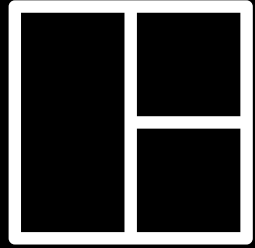
## Flexible room setup

Units feature adaptable designs, catering to diverse living needs while ensuring privacy and practicality.



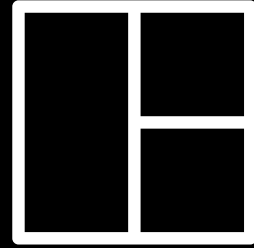


### MODEL A & J



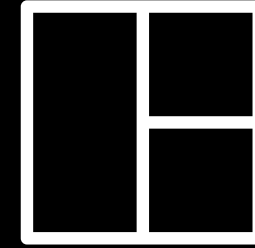
72 m<sup>2</sup>

### MODEL B & I



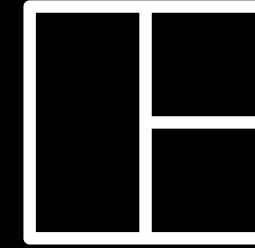
79 m<sup>2</sup>

### MODEL D & G



92 m<sup>2</sup>

### MODEL C & H



121 m<sup>2</sup>

---

## THE LAYOUTS

Let's explore the thoughtful design and spacious elegance that define the layout of these exceptional living spaces.

---



# Model A & J

72m<sup>2</sup>

- Each unit spans 72m<sup>2</sup> with a balanced layout.
- Featuring 1 bedroom convertible to 2, each unit offers 2 full bathrooms.
- The master bedroom includes a walk-in closet.
- 1 parking space provided.
- Seamless integration of living areas, bedrooms, and other spaces.



72 m<sup>2</sup> | 1 habitación, 2 baños, walk-in closet y 1 estacionamiento.



2 habitaciones, 2 baños, walk-in closet y 1 estacionamiento. 72 m<sup>2</sup>



# Model B & I

79m<sup>2</sup>



Todos los dibujos son una concepción artística y el promotor se reserva el derecho a modificaciones en color y diseño.

**79 m<sup>2</sup>** | 1 habitación, 2 baños, walk-in closet y 1 estacionamiento.



Todos los dibujos son una concepción artística y el promotor se reserva el derecho a modificaciones en color y diseño.

2 habitaciones, 2 baños, walk-in closet y 1 estacionamiento. **79 m<sup>2</sup>**

- Each model boasts 79m<sup>2</sup> of space, ensuring a roomy and flexible living area.
- Featuring 1 bedroom convertible to 2, along with 2 full bathrooms.
- Master bedroom designed for ultimate comfort, equipped with walk-in closet..
- Includes 1 dedicated parking space for residents.
- Layout thoughtfully planned to maximize space utilization.



# Model D & G

92m<sup>2</sup>

- Units cover a 92m<sup>2</sup> area, designed for spacious living.
- Includes 1 bedroom convertible to 2, with 2 full bathrooms.
- The master bedroom boasts comfort and luxury, featuring a walk-in closet.
- Unique feature: 2 parking spaces available for each unit.



Todos los dibujos son una concepción artística y el promotor se reserva el derecho a modificarlos en color y diseño.

92 m<sup>2</sup> | 1 habitación, 2 baños, walk-in closet y 2 estacionamientos.



Todos los dibujos son una concepción artística y el promotor se reserva el derecho a modificarlos en color y diseño.

92 m<sup>2</sup> | 2 habitaciones, 2 baños, walk-in closet y 2 estacionamientos.





# Model C & H

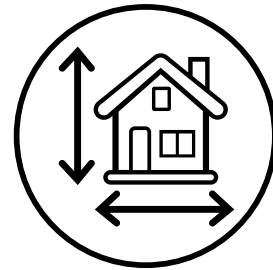
121m<sup>2</sup>

---

- Units spanning 121m<sup>2</sup> offer generously sized living spaces.
- Includes 2 bedrooms convertible to 3, with 2 full bathrooms.
- The master bedroom ensures comfort, featuring a walk-in closet.
- Each unit boasts 2 parking spaces.
- Layout is meticulously crafted for optimal space and functionality.



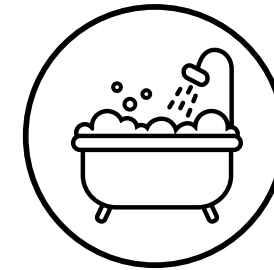
# P.H Van Gogh in El Cangrejo



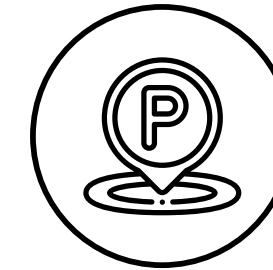
Apartments from  
72m2 to 121m2



1 to 2 bedrooms



2 Bathrooms



1 to 2  
parking spaces

Model	Number of Bedrooms	Starting Price
Model A & J: 72m2	1 or 2 Bedrooms	\$199,000
Model B & I: 79m2	1 or 2 Bedrooms	\$199,500
Model D & G: 92m2	1 or 2 Bedrooms	\$256,000
Model C & H: 121m2	2 bedrooms	\$306,500





---

## **THE AMENITIES**

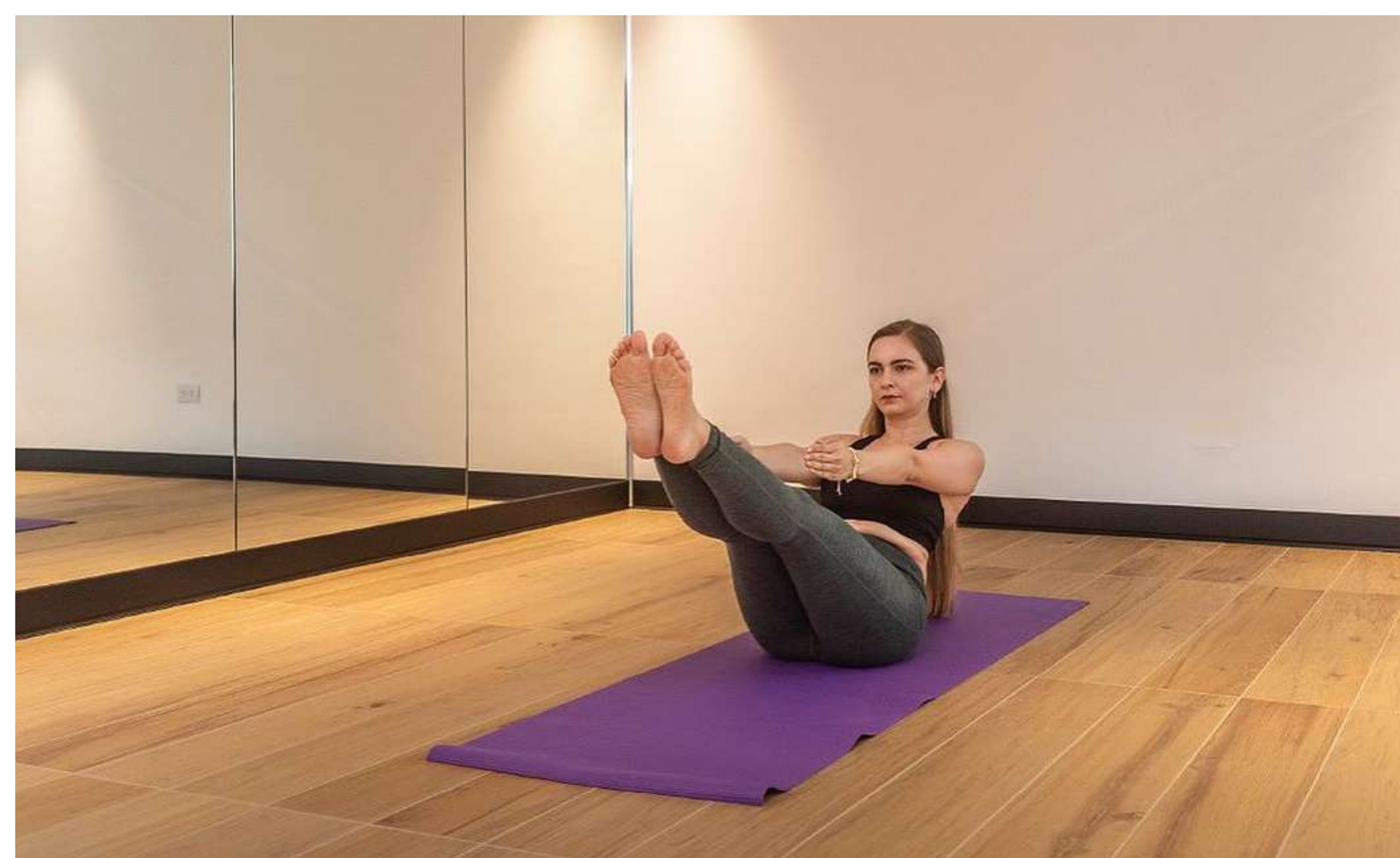
Discover the amenities that offer every convenience and luxury at your fingertips.

---

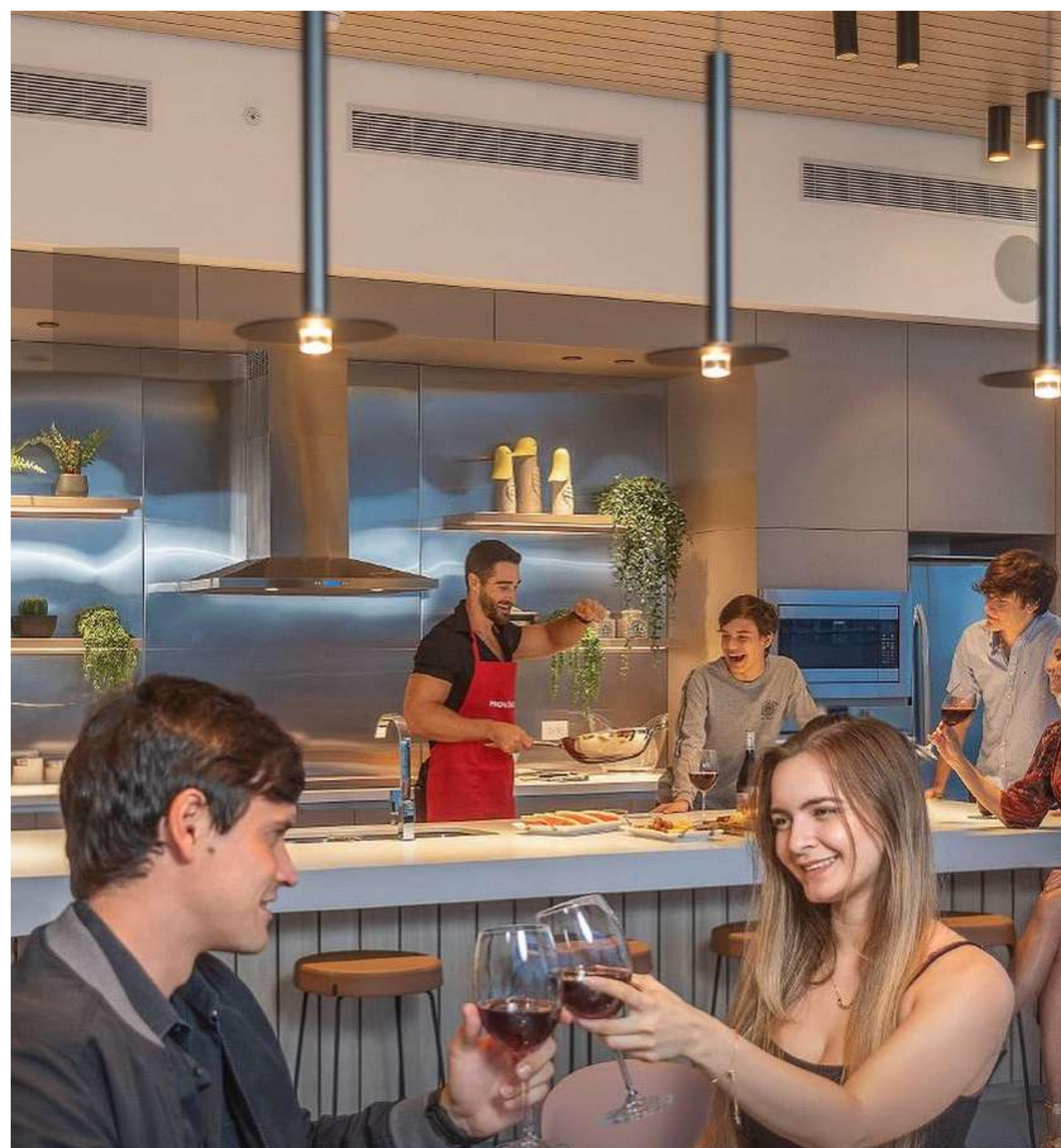






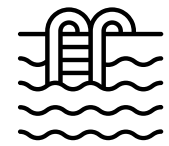




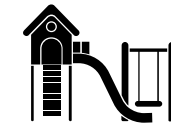




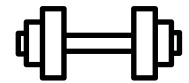
## Luxury Amenities For Residents



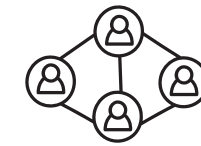
Pool & Terrace



Children's Playground



Fitness Studio



Co-Working Area



Pet Spa



Events Room



Laundry



Outdoor Lounge



Community Area  
& Food Room



Yoga Area

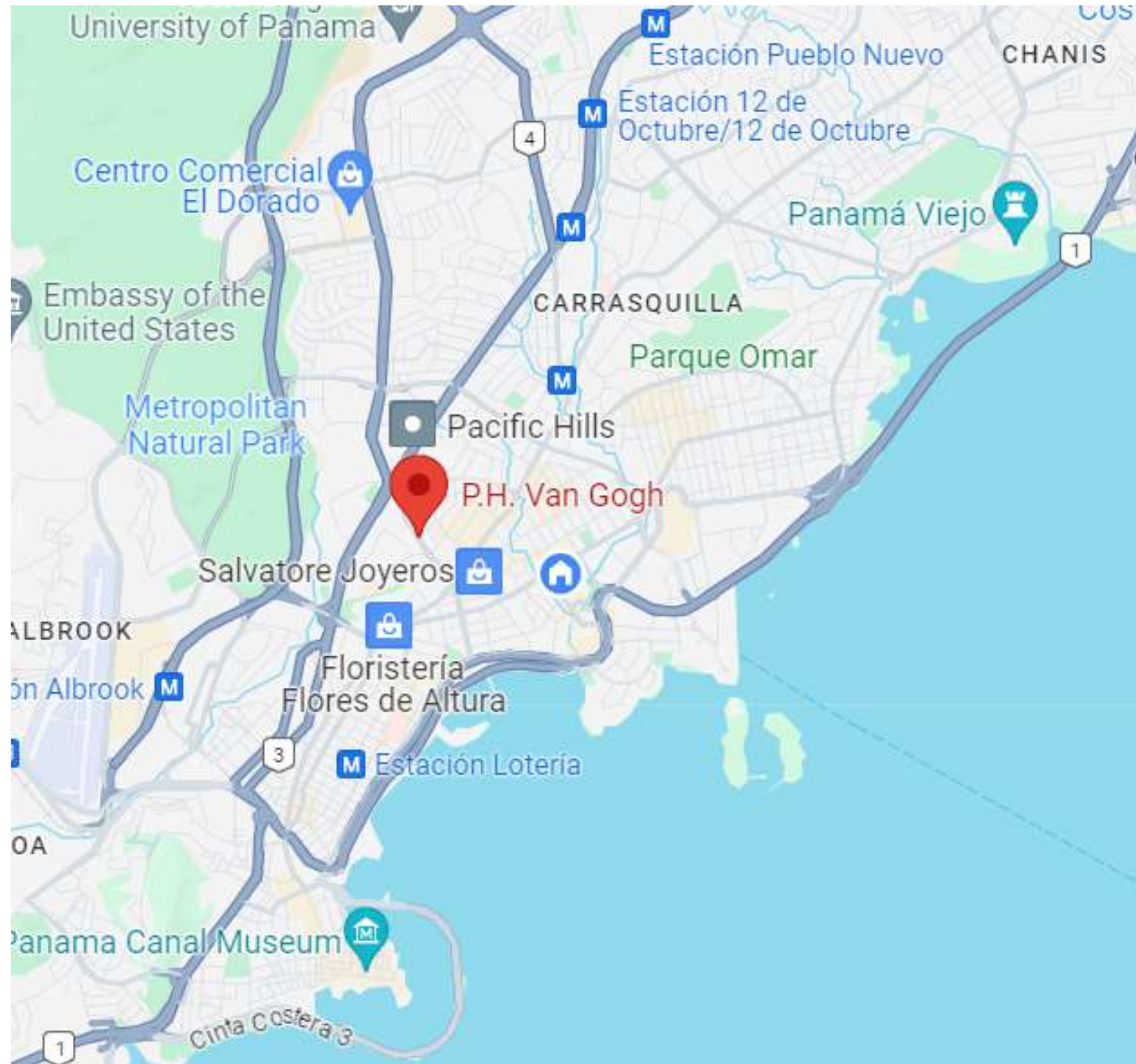




## THE LOCATION

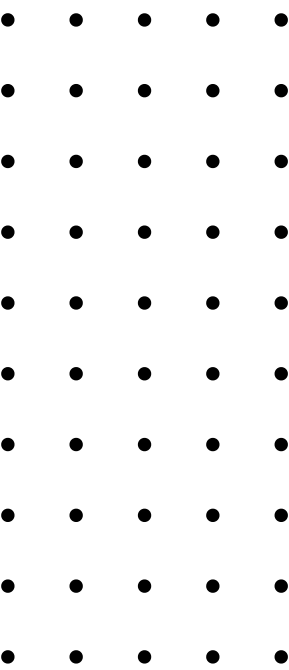
Experience the convenience of a prime location, surrounded by schools, shopping, healthcare, and dining, all within easy reach.





## LOCATED IN EL CANGREJO

Van Gogh Panama enjoys a prime location in the heart of Panama City's El Cangrejo neighborhood, a place renowned for its energetic atmosphere and cultural diversity. This lively area is full of various amenities and busy streets, making P.H. Van Gogh a highly desirable place to live. It's perfectly situated for easy access to the city's main business areas, cultural attractions, and entertainment centers, offering an ideal mix of city living convenience and local neighborhood appeal.





## SCHOOLS

P.H. Van Gogh in El Cangrejo, Panama City, is near various educational institutions, ideal for families. The area hosts esteemed schools like Universidad de Panama for higher education. For younger students, nearby schools like Oxford International School and Instituto Alberto Einstein provide strong academic programs.

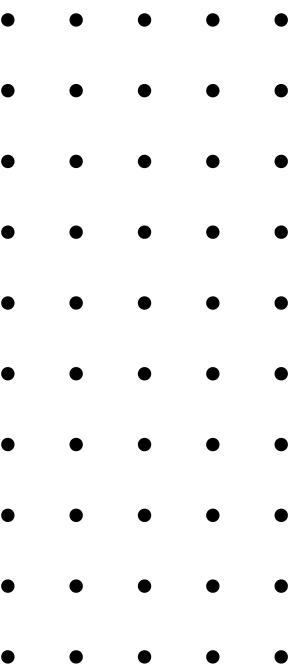






## SHOPPING

Living in Van Gogh means easy access to diverse shopping in Panama City. Nearby are Multiplaza Mall and Soho Mall, offering upscale choices, while Albrook Mall provides a vast array of stores and entertainment. Residents enjoy both luxury and everyday shopping experiences conveniently close to home.





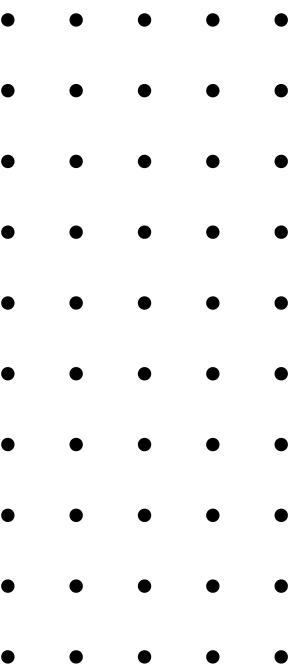






## RESTAURANTS

El Cangrejo is a culinary hub with diverse dining options. From high-end international cuisine to traditional Panamanian dishes, residents can enjoy acclaimed restaurants like Restaurante Angel and El Caribe for Caribbean flavors. Cafes and bistros provide relaxed settings for quick snacks or gourmet coffee.



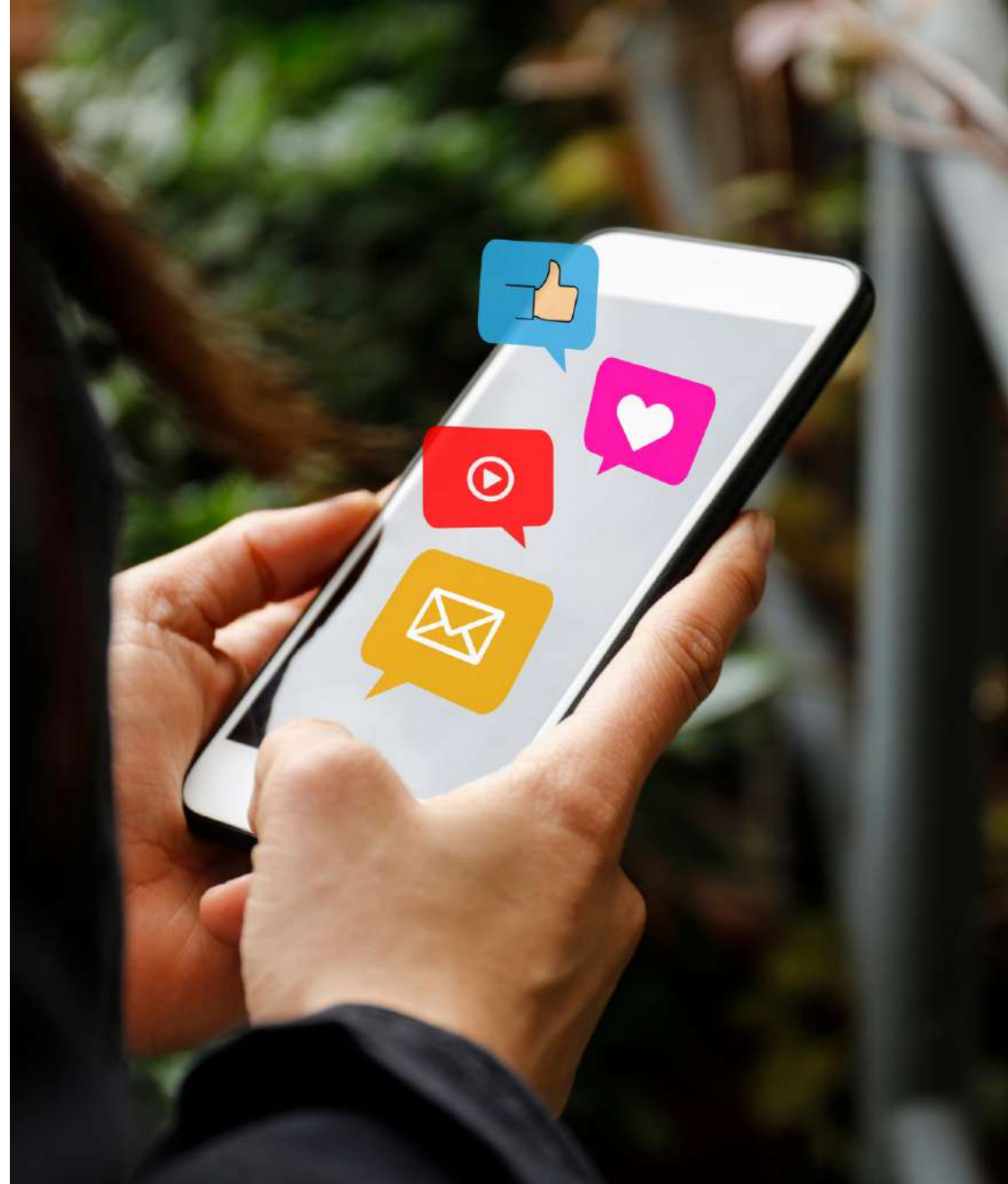


## HEALTHCARE

P.H. Van Gogh is close to Panama City's top medical facilities, including the renowned Hospital Nacional. Nearby are specialized centers like Centro Medico Paitilla and Clinica Hospital San Fernando, offering diverse treatments. The area also hosts various clinics for specialized medical services, from diagnostics to treatments.







---

## **GET IN TOUCH**

Ready to make your dream home a reality? Reach out to us to schedule a showing.

---



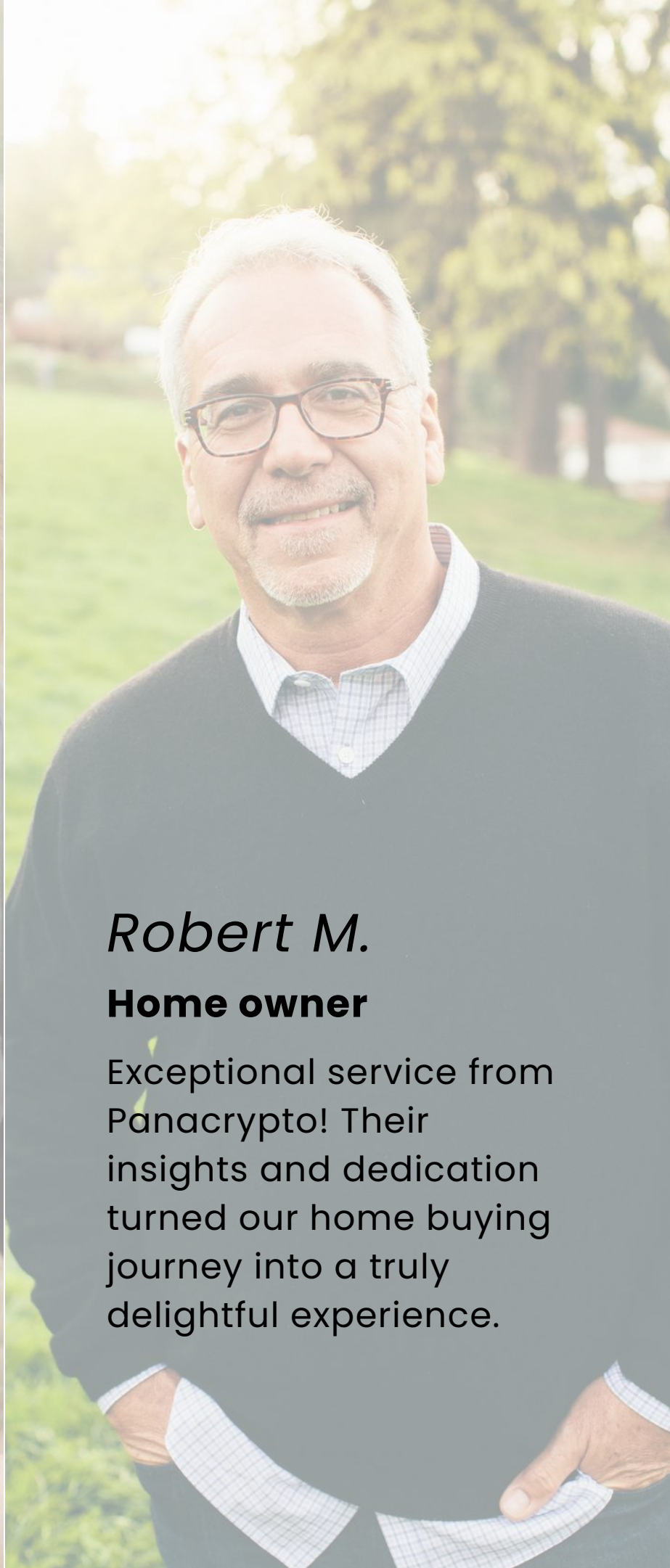
# CLIENT TESTIMONIALS

A portrait of a young woman with long, wavy blonde hair, smiling warmly. She is wearing a grey top and a gold necklace.

*Julia R.*

**Home owner**


Panacrypto exceeded our expectations! Their team guided us through every step, making the daunting process of finding our dream home seamless and stress-free.

A portrait of a middle-aged man with short grey hair and glasses, smiling. He is wearing a dark sweater over a light-colored collared shirt.

*Robert M.*

**Home owner**

Exceptional service from Panacrypto! Their insights and dedication turned our home buying journey into a truly delightful experience.

A portrait of a young woman with dark, curly hair, smiling broadly. She is wearing a pink top and pearl earrings.

*Shay W.*

**Home owner**

Thanks to Panacrypto, we found our perfect home. Their patience, expertise, and personalized service were unparalleled.



# FOLLOW US



**Facebook**  
@panacrypto



**Instagram**  
@panacrypto\_com



**Twitter**  
@panacryptocom

---





PANACRYPTO

***Website***

[www.panacrypto.com](http://www.panacrypto.com)

***Email***

[office@panacrypto.com](mailto:office@panacrypto.com)

***Telephone / Whatsapp***

+1 (812) - 227 -3992

