

# GET TO KNOW TOWER 400

---

Tower 400 is the last building under construction in the exclusive area of Punta Pacifica. It is also the project that concludes the Pacific Point development, the first luxury development established in the country. This makes it an authentic real estate and residential gem in Panama City.

The project is conceived with the comfort of its residents in mind. With a generously distributed architectural floor plan, each of its three-unit models offers ideal spaces for living with the family or for relaxing in each independent room.



# APARTMENTS

---

Uninterrupted  
view of the  
Pacific Ocean

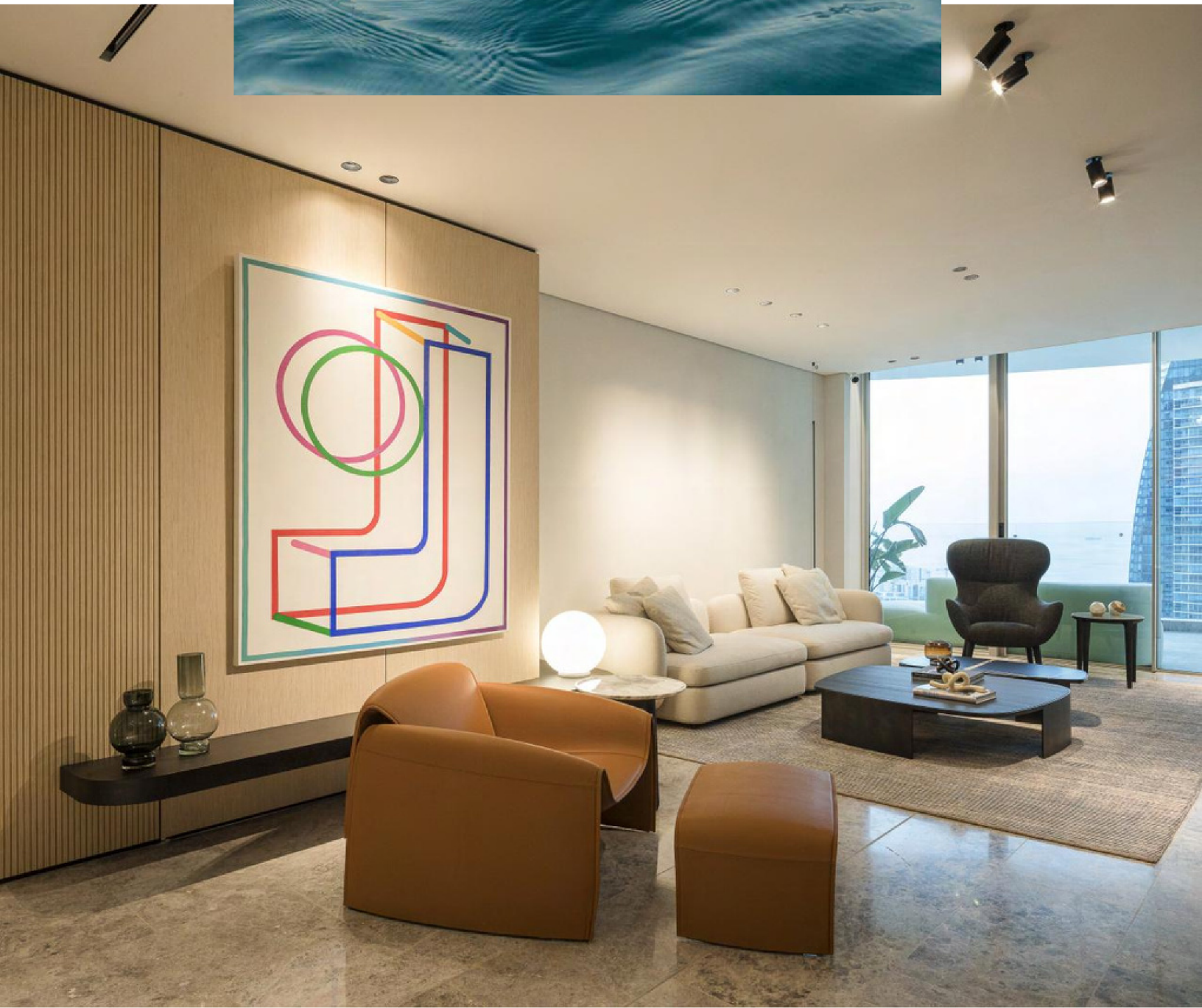
Tower 400 is a modern 48-story luxury building, located in a privileged corner facing the Pacific Ocean.

Its avant-garde design, with large spaces and floor-to-ceiling windows, offers three apartment models. In addition, it presents the added value of custom finishing options to create your home to your liking and live surrounded by convenience and comfort.



---

Apartments with  
beautiful 180° sea  
views from their  
different spaces.



# MODELS

---

MODEL A • 484m<sup>2</sup>

1 UNIT PER FLOOR

JUNIOR MODEL  
SKY RESIDENCES  
sold out

A1 272 m<sup>2</sup>

JUNIOR MODEL  
SKY RESIDENCES  
sold out

A2 251 m<sup>2</sup>

---

MODEL B • 359m<sup>2</sup>

JUNIOR MODEL  
SKY RESIDENCES

265 m<sup>2</sup>

---

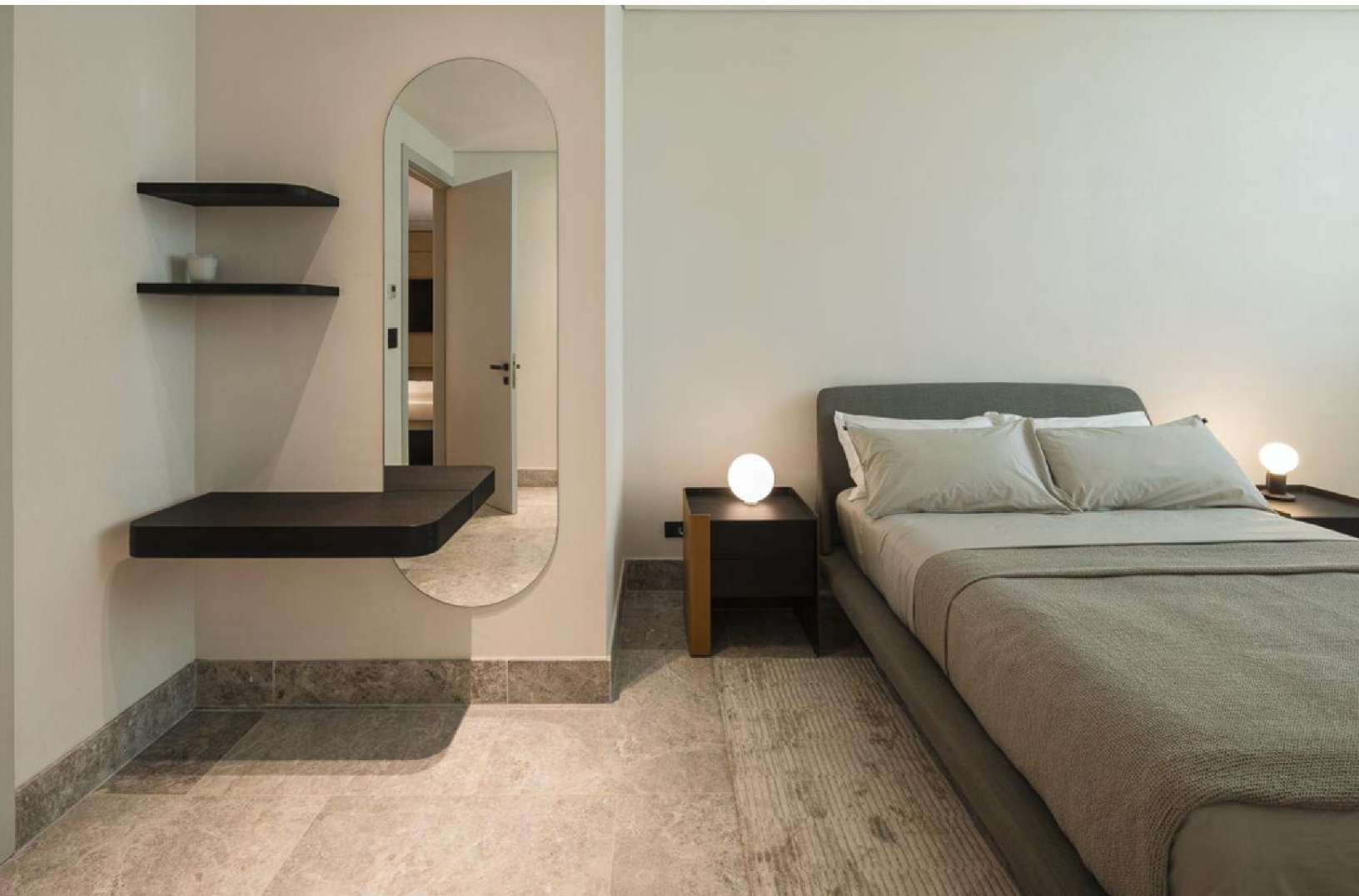
MODEL C • 306m<sup>2</sup>

JUNIOR MODEL  
SKY RESIDENCES  
sold out

250 m<sup>2</sup>







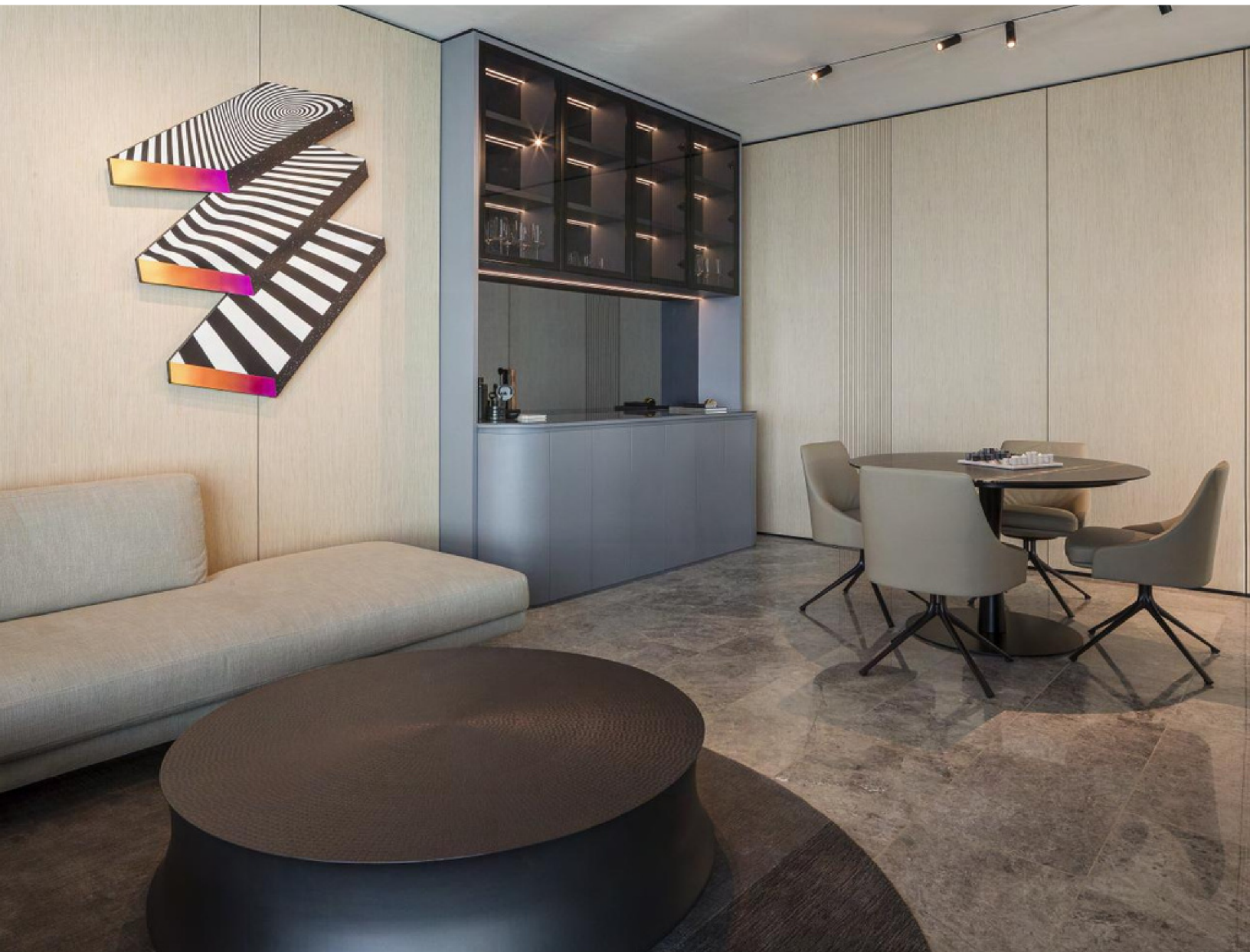


# FINI SHES

---

## Custom interiors

Inspired by the texture and color of the three types of imported marble that will be used for the units' floors, each option establishes the color palette and finishes for the doors, closets, bathroom cabinets and kitchen countertops.



---

## Ultramodern finishes

Quartz countertops, stainless steel and handle less furniture, pivot style doors, custom bathrooms.

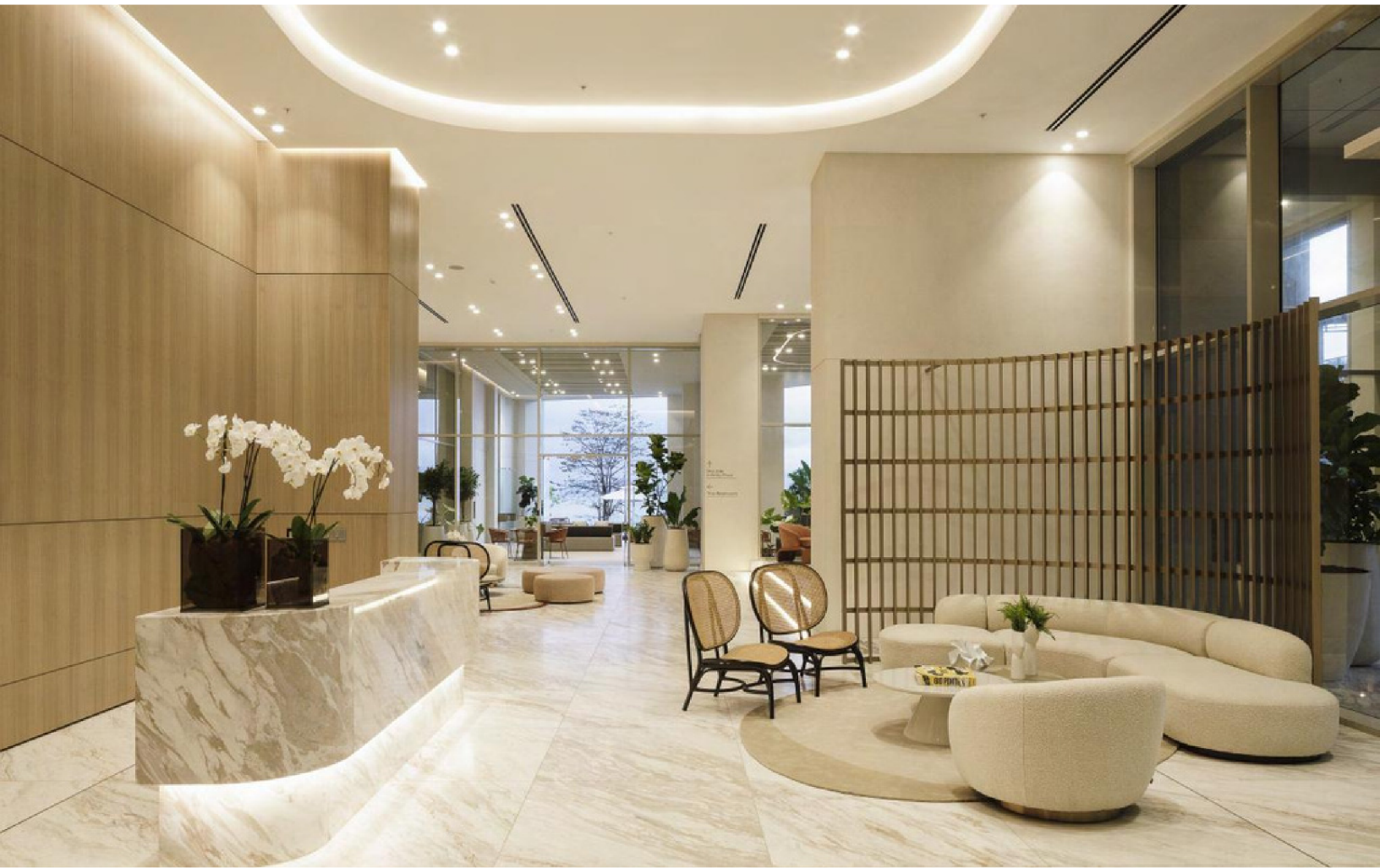


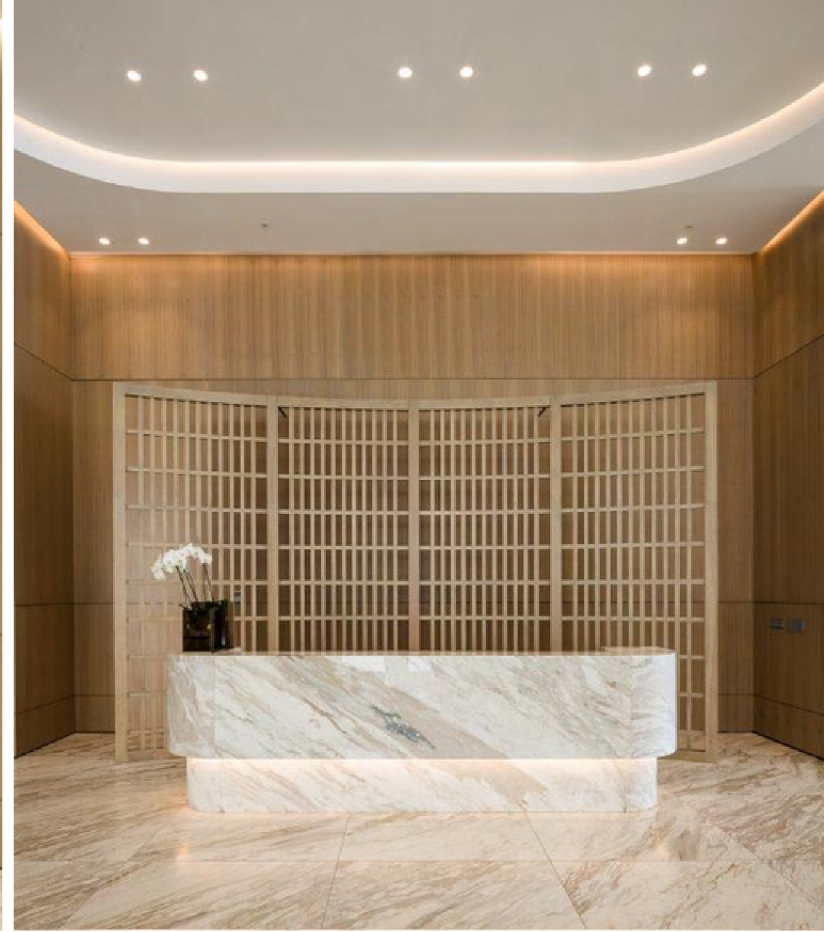


# SOCIAL SPACES

In addition to the common spaces within each apartment, Tower 400's social areas have something for everyone.

Starting with the main lobby, which was designed by the renowned interior designer Carolina Castrillon. It will be the meeting point with your neighbors and the Pacific Point community.

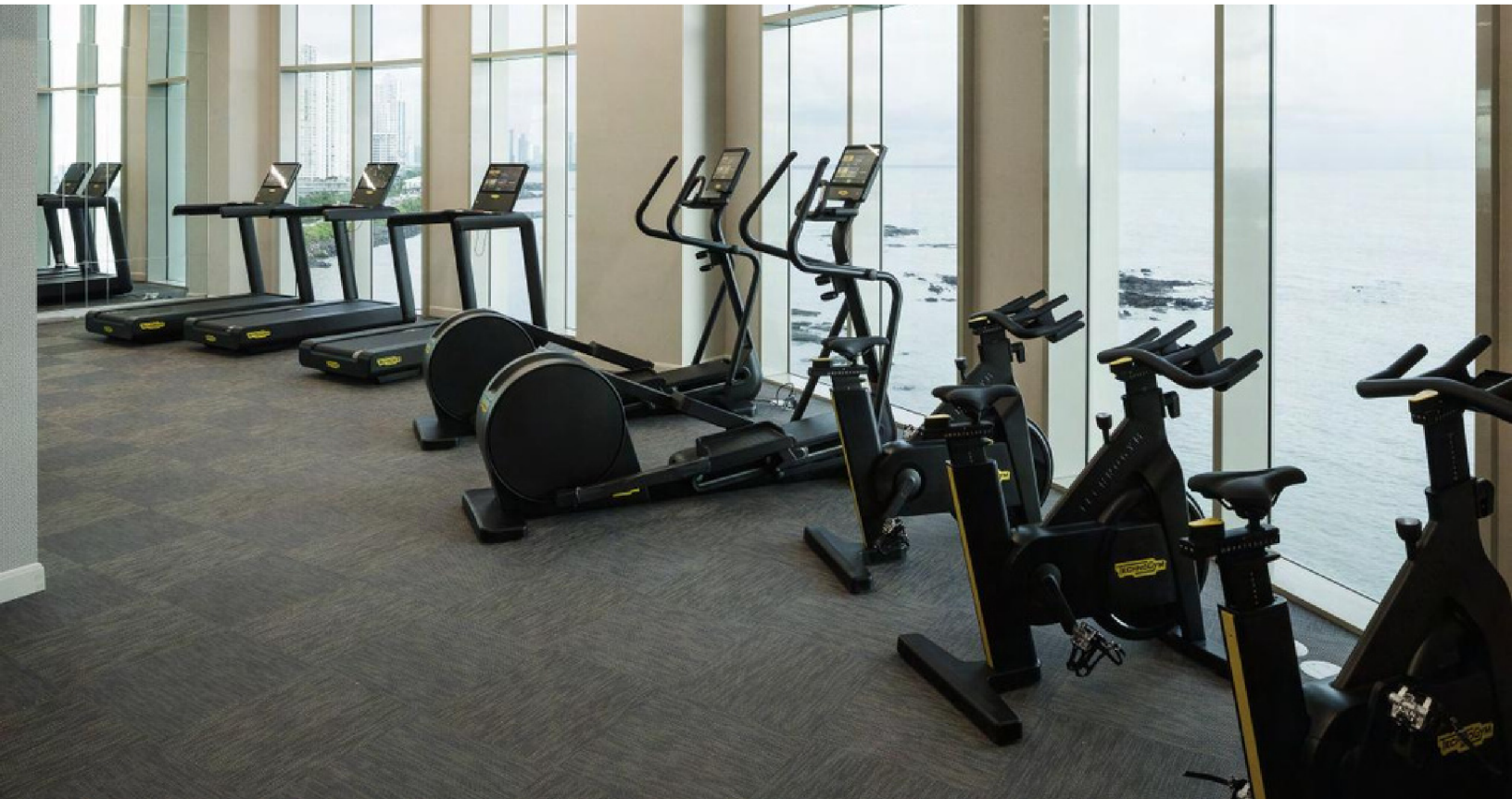




You will have a party and events room at your disposal for celebrations or special meetings. Children will also have a games room. All these spaces will always be cool with air conditioning.



# HEALTH AND SPORTS



Staying in shape will be a pleasure. The tower has a Fitness Center area with a modern and equipped gym, aerobics room, a sauna and a spa-style massage room.

The project also has multiple spaces for:

- Tennis
- Squash
- Racquetball
- Basketball
- Soccer with synthetic grass

# INFINITY POOL

---

Infinity pool with sea view,  
designed by international master  
pool designer Joan Roca

The pool on the ground floor is another excellent amenity: an infinity pool with sea views, designed by international master pool designer Joan Roca. Whether during summer days or for a weekend dip, you will have special moments in this place.

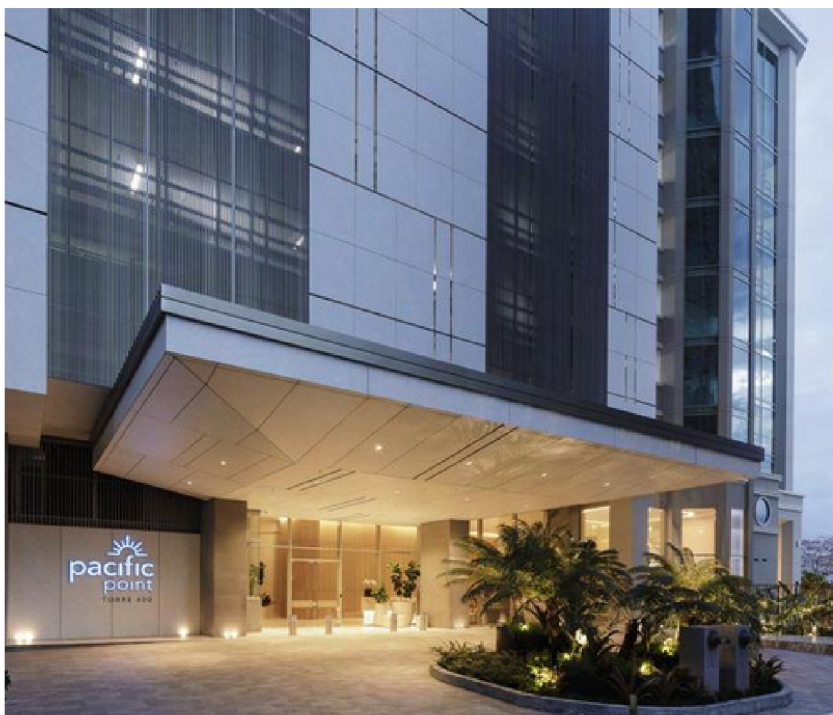


# LOCATION AND TRANSIT

Punta Pacifica is located in a privileged area, as it quickly connects with various strategic points in Panama City.

A few kilometers away are the Multiplaza Pacific and Multicentro shopping centers, both with international brand stores and services such as banks and restaurants of all kinds. In addition, a few meters away is one of the best hospitals in the city, Pacifica Salud, which adds a lot of value to the resident. Tocumen International Airport is also a short distance away.

On the other hand, the city center, the banking area, the Cinta Costera and the exit to the cities and beaches in the countryside via the Bridge of the Americas, is also very close to your residence.



# PACIFIC POINT

---

"Building quality  
of life"

- Pacific Developers

Pacific Point in Punta Pacifica is one of the best developed and exclusive private residential communities in Panama and Central America.

Started in 2001, it has been built by Pacific Developers, a pioneering firm in developing the potential of this new area of the city, through real estate projects with an ideal balance between location, design and quality.

It consists of an approximate area of 45,000.00 m<sup>2</sup> facing 300 meters of coast, for an eternal view of the sea.

It has the strictest security measures, such as a large wall around the entire perimeter of the project, 24-hour access control and individual sentry boxes for each two apartment towers.

The project stands out for being one of the first to combine luxury apartment towers, large residential villas and modern style houses in a single community.

The master plan of the entire urbanization was designed by the architectural firm George Moreno & Partners, whose focus is based on improving the quality of life of people through an elegant, comfortable architectural design and with efficient urban planning that maintains close contact with nature.

Tower 400 is the building that closes this large private urban development, constantly improved over almost 20 years according to market trends and the demands of its clients.

That is why it is the jewel in the crown of Punta Pacifica.

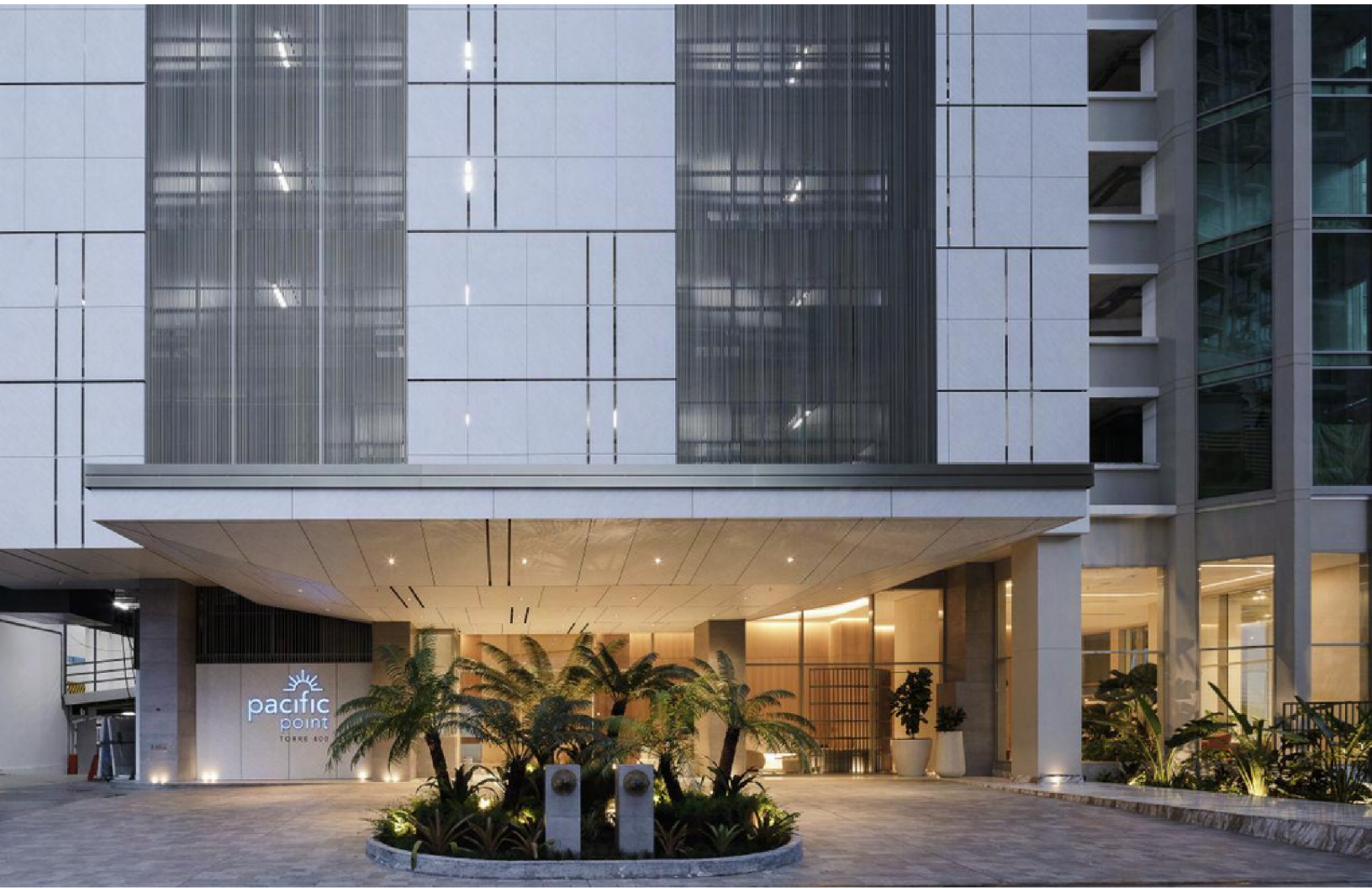


# CLUB HOUSE

---

Featuring a garage  
for guest parking

For common use, it is a meeting point for members of the Pacific Point community. It is surrounded by decorative fountains and has everything necessary to hold celebrations or events. It also has its own garage for guest parking.



# COLLABORATORS



Crafted by:

- Carolina Castrillon
- Marietta Mallol
- George Moreno
- Pacific Developers
- Poliform
- Joan Roca
- Titi Hernandez - Hiedra y Bambú

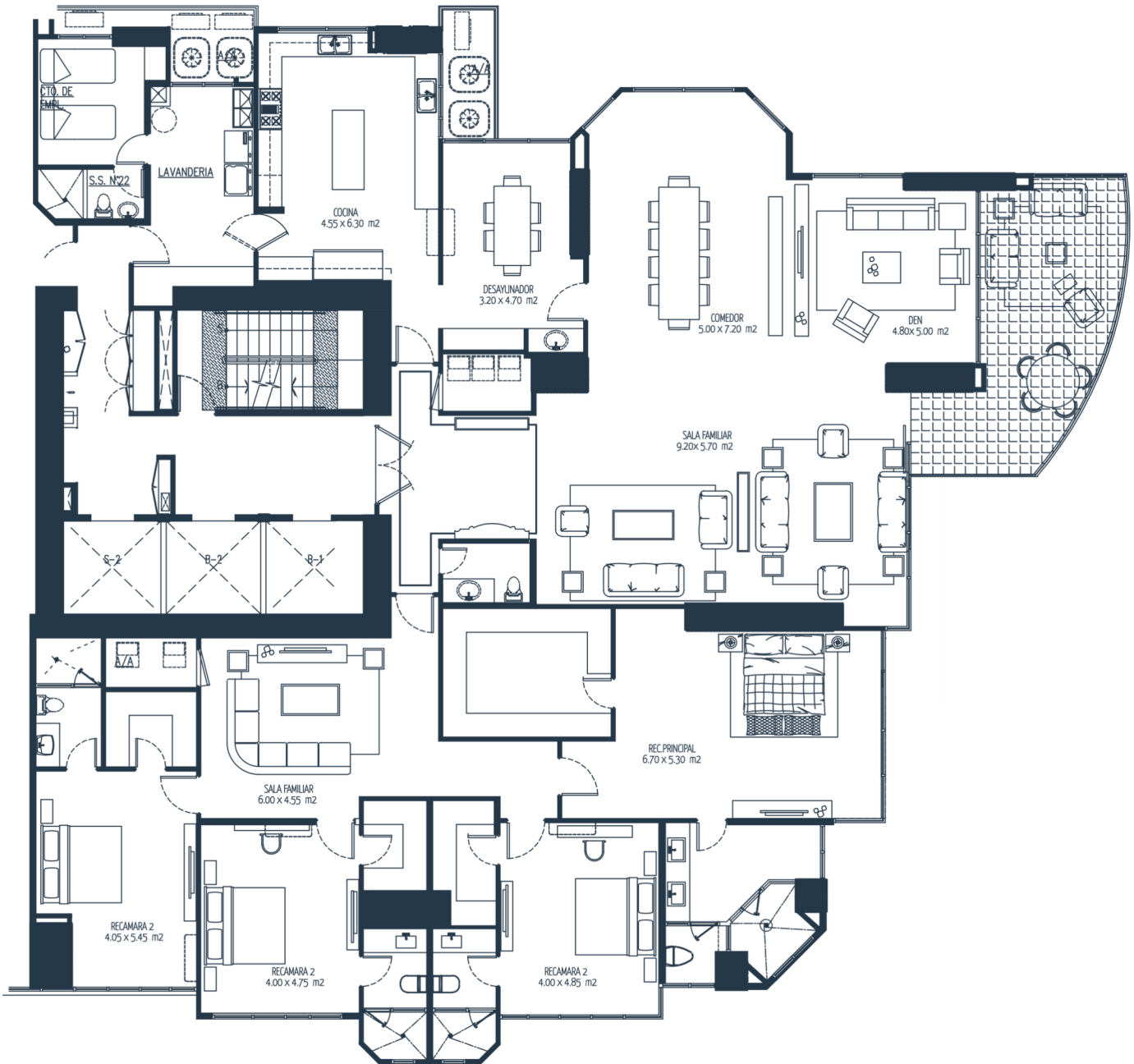


MODEL

A

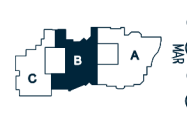


484.00 m<sup>2</sup>

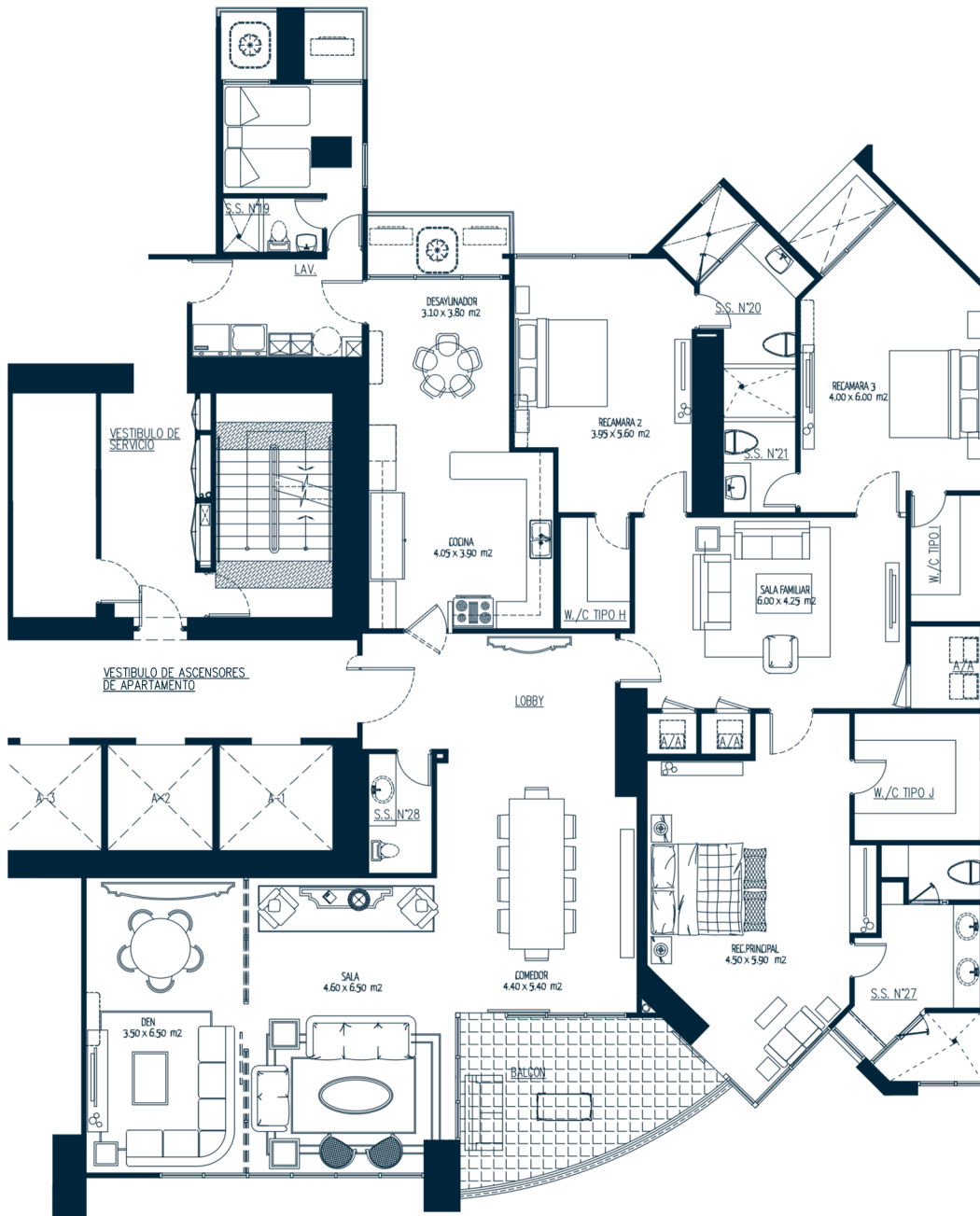


MODEL

B



359.00 m<sup>2</sup>

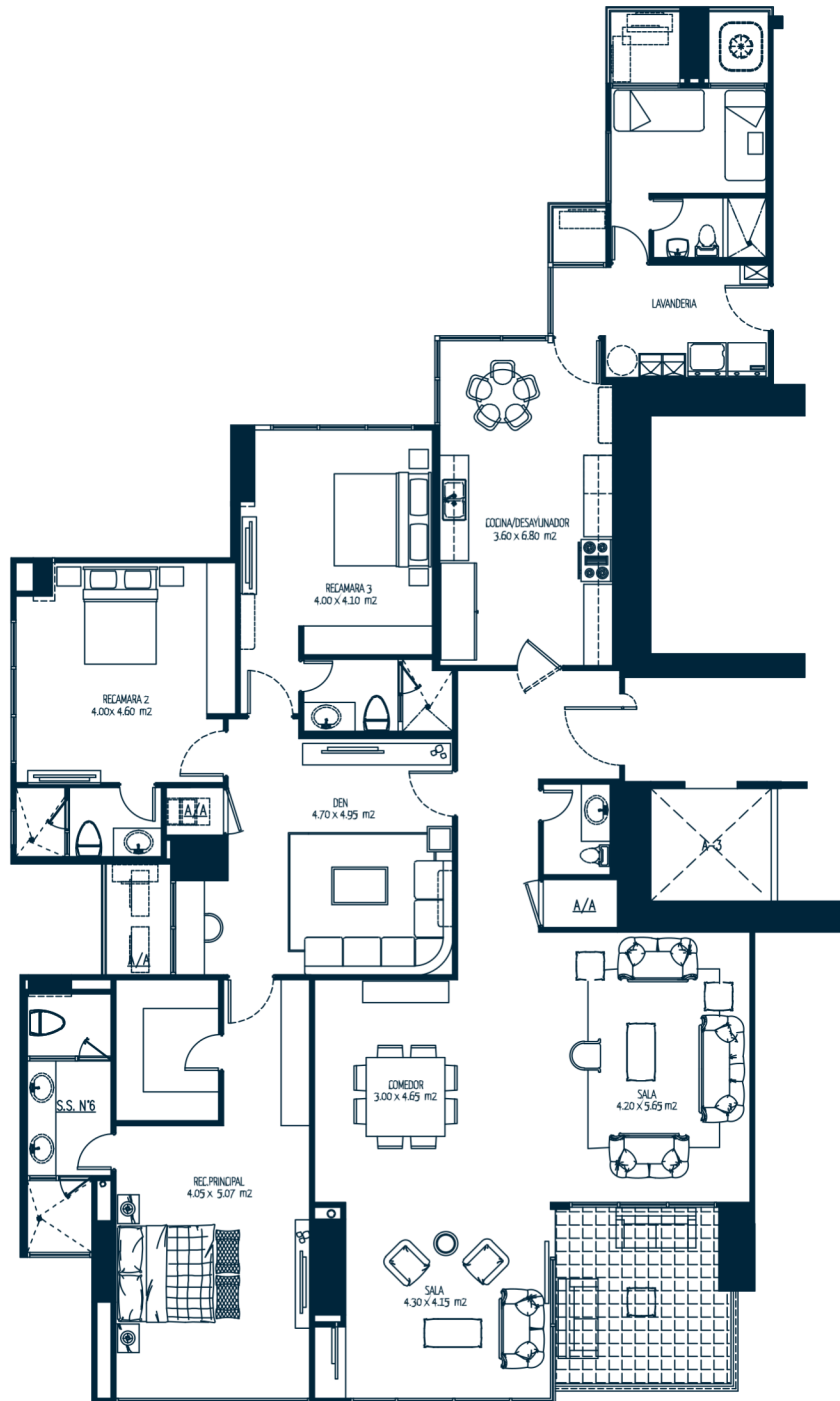


MODEL

C



306.00 m<sup>2</sup>

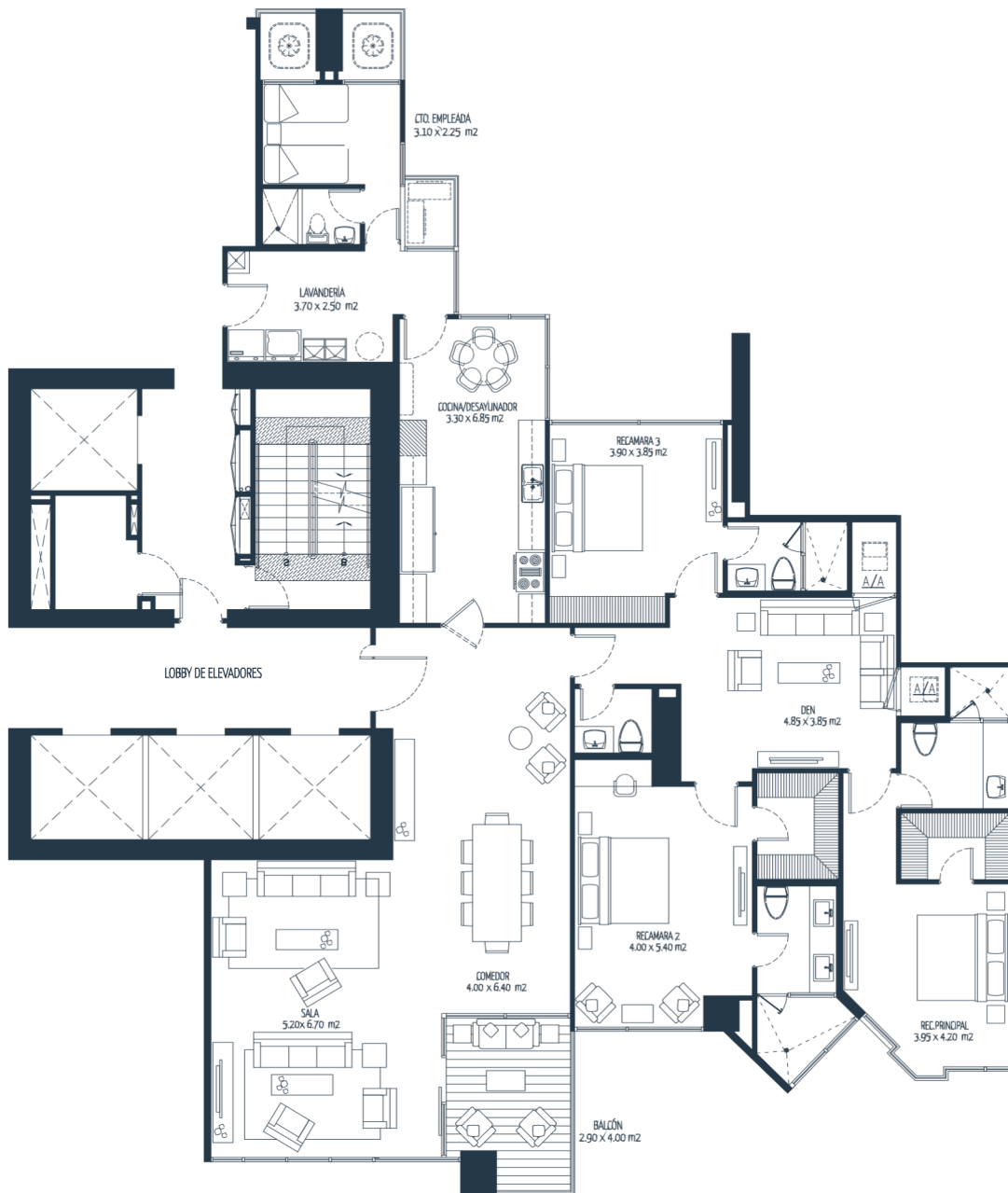


MODEL

B1

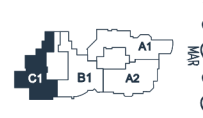


265.00 m<sup>2</sup>

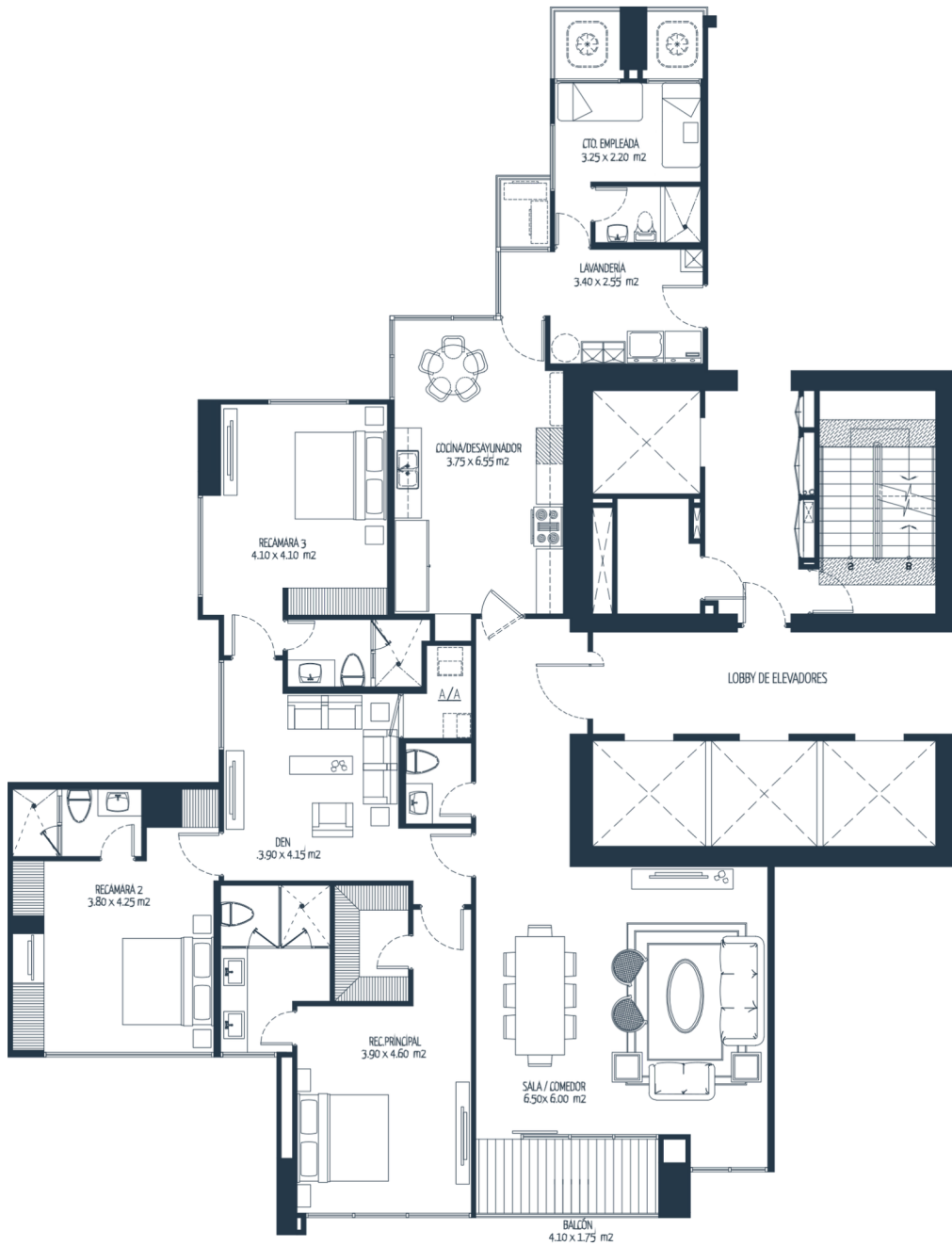


MODEL

C1



250.00 m2





PACIFIC  
DEVELOPERS

+507 269-3600 / +507 6324-3333

[ventas@pacificdeveloperspanama.com](mailto:ventas@pacificdeveloperspanama.com)

[pacificpointpanama.com](http://pacificpointpanama.com)

[pacificdeveloperspanama.com](http://pacificdeveloperspanama.com)

[@pacificpointpanama](https://www.instagram.com/pacificpointpanama)

