



OLAS

de Amatecampo

• Beach Homes, San Luis Talpa •

OLAS

de Amatecampo

OLAS de Amatecampo

A new beach home concept located in San Luis Talpa, in a strategic area just a few minutes from El Salvador's International Airport and only one hour from the city.

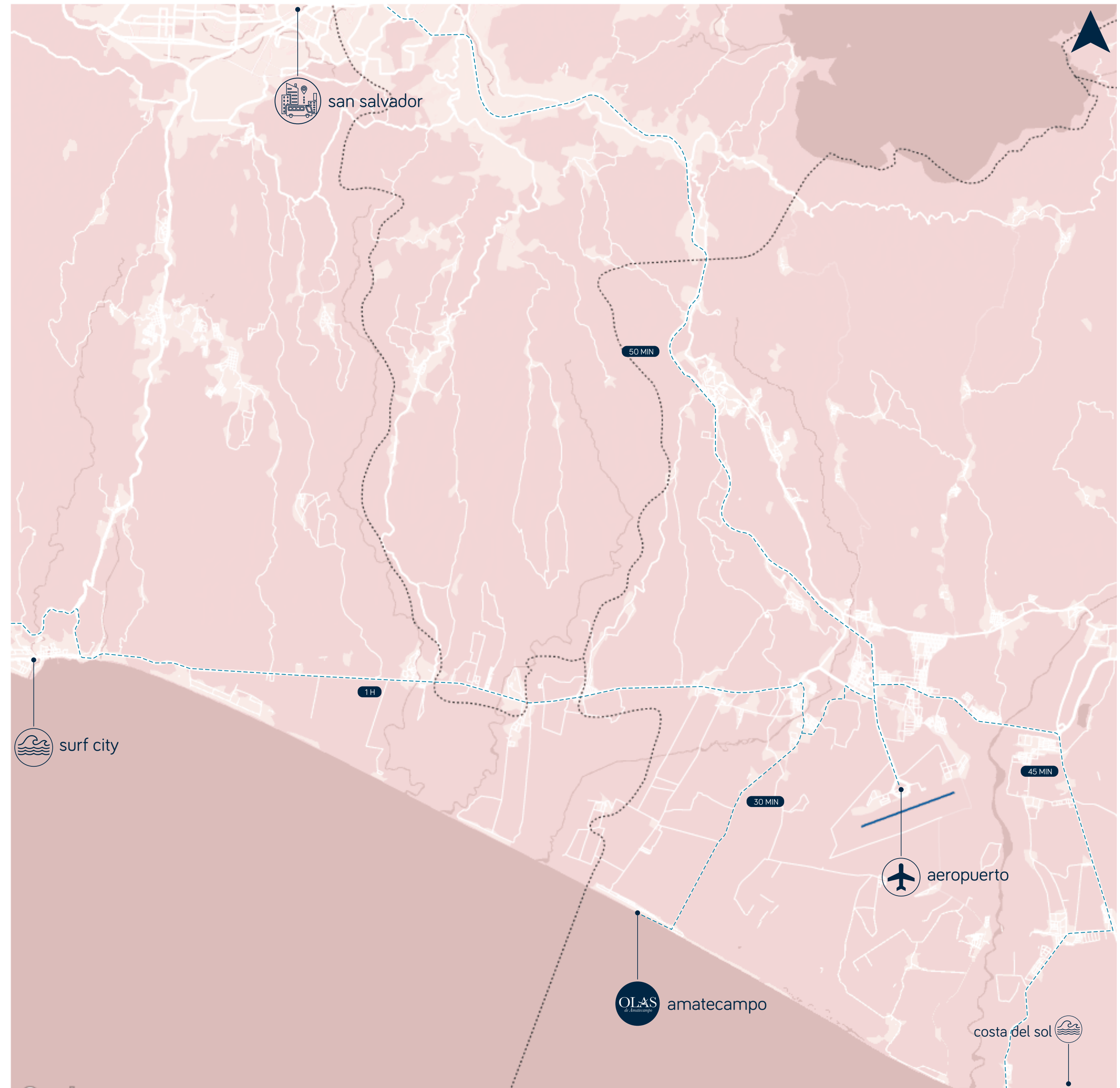
Inspired by the strength and serenity of the Pacific, *OLAS de Amatecampo* blends contemporary architecture with the natural essence of the coastal environment.

Each residence has been designed to fully embrace the sea and the tranquility of the surroundings, incorporating noble materials, cross ventilation, and a layout that flows to the rhythm of the waves.

A space created for living, investing, and reconnecting with nature, where every detail reflects the perfect balance between comfort, design, and harmony with the ocean.

Location

A 30 MIN DESDE EL AEROPUETO
A 45 MIN DESDE COSTA DEL SOL
A 50 MIN DESDE SAN SALVADOR
A 1 HORA DESDE SURFCITY





- | | |
|------------------------|---------------------|
| 1 AMATECAMPO VILLAS | 5 RANCHO TRES JOYAS |
| 2 A WAVE FOR IT ALL #2 | 6 RANCHO YOKOTA |
| 3 SANTA MARÍA DEL MAR | 7 SOLEA BEACH HOUSE |
| 4 BEACH HEAVEN | 8 RANCH WAVE&SEA |





Project Description

OLAS *de Amatecampo* is an exclusive residential community featuring 9 independent homes, designed to embrace the calm and openness of the coastal environment

Key Features

- **Location:** Amatecampo, San Luis Talpa — a natural setting with immediate access to the beach.
- **Land:** Lots ranging from 3,776 to 4,529 ft²
- **Construction:** Homes from 1,350 to 1,371 ft², distributed across two floors.
- **Layout:**
 - 3 bedrooms
 - Spacious social áreas
 - Flex space (TV room or junior bedroom 3)
 - Terraces open to natural light
 - Private pool
- **Community Design:** An intimate and well-planned residential residential cluster where each home maintains its privacy while remaining connected to the surrounding natural environment.

Residential Complex

Exclusive residential development featuring 9 independent homes



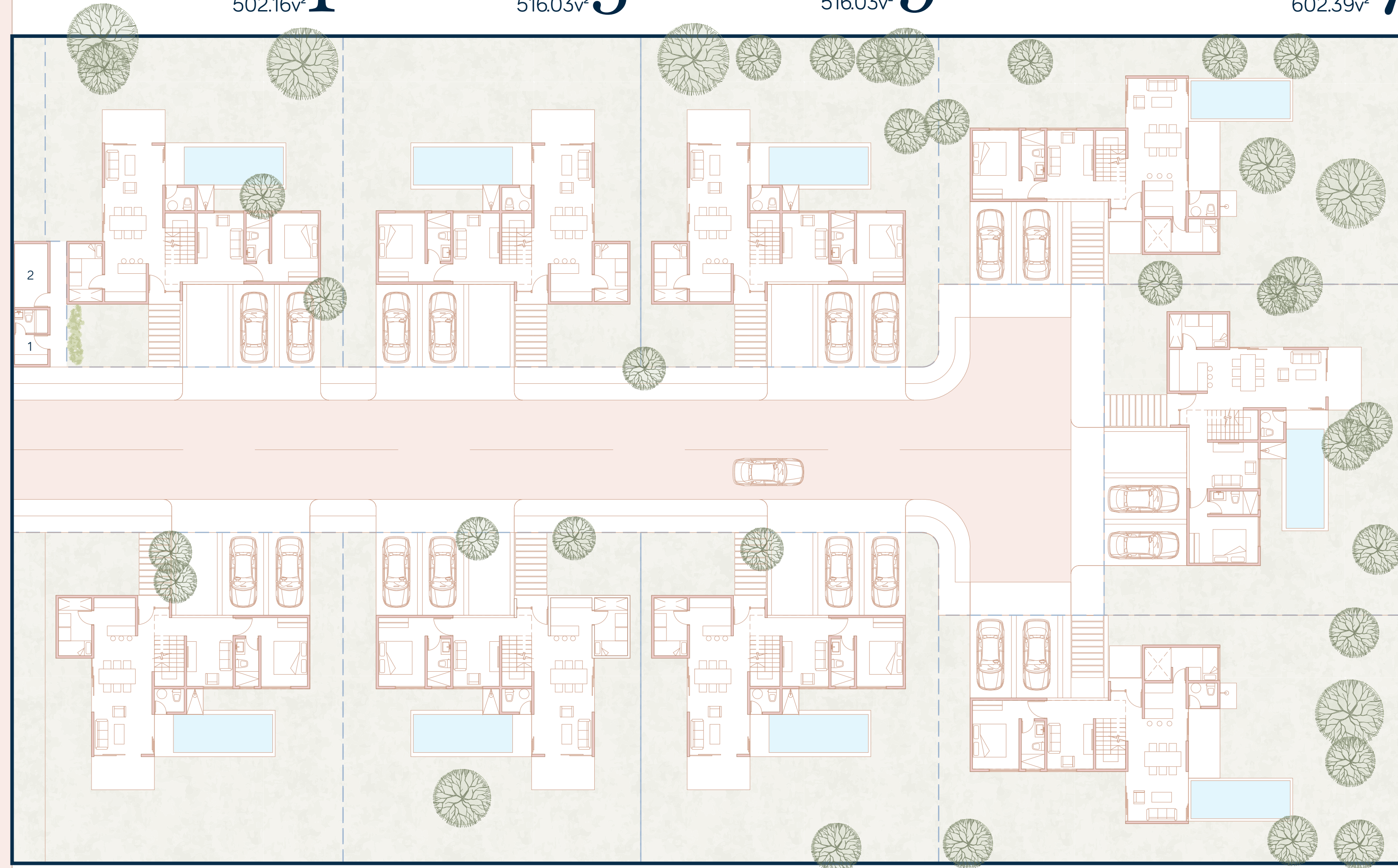
- 1. CASETA
- 2. BODEGA

TIPO A
LOTE 1
502.16v²

TIPO A
LOTE 3
516.03v²

TIPO A
LOTE 5
516.03v²

TIPO B
LOTE 7
602.39v²



HACIA PLAYA

TIPO A
LOTE 9
516.33v²

TIPO A
LOTE 2
516.33v²

TIPO A
LOTE 4
516.33v²

TIPO A
LOTE 6
516.03v²

TIPO B
LOTE 8
602.39v²



Exterior *Visuals*





OLAS

de Amatecampo

*The images shown are for reference only and are subject to change.

OLAS

de Amatecampo

Beach Homes, San Luis Talpa



*The images shown are for reference only and are subject to change.

OLAS

de Amatecampo

• Beach Homes, San Luis Talpa •



*The images shown are for reference only and are subject to change.

OLAS

de Amatecampo

• Beach Homes, San Luis Talpa •



*The images shown are for reference only and are subject to change.



OLAS

de Amatecampo

*The images shown are for reference only and are subject to change.

OLAS

de Amatecampo

• Beach Homes, San Luis Talpa •



*The images shown are for reference only and are subject to change.

OIAS

de Amatecampo

• Beach Homes, San Luis Talpa •



*The images shown are for reference only and are subject to change.



OLAS de Amatecampo

OLAS

de Amatecampo

• Beach Homes, San Luis Talpa •



*The images shown are for reference only and are subject to change.

Residences *Types*



1371.32 ft²

Model A

3 ROOMS

2 FLOORS

2 FULL
BATHROOMS

1 ½ BATHROOM

INTEGRATED (terrace and pool)

OLAS de Amatecampo • Beach Homes , San Luis Talpa | 2025

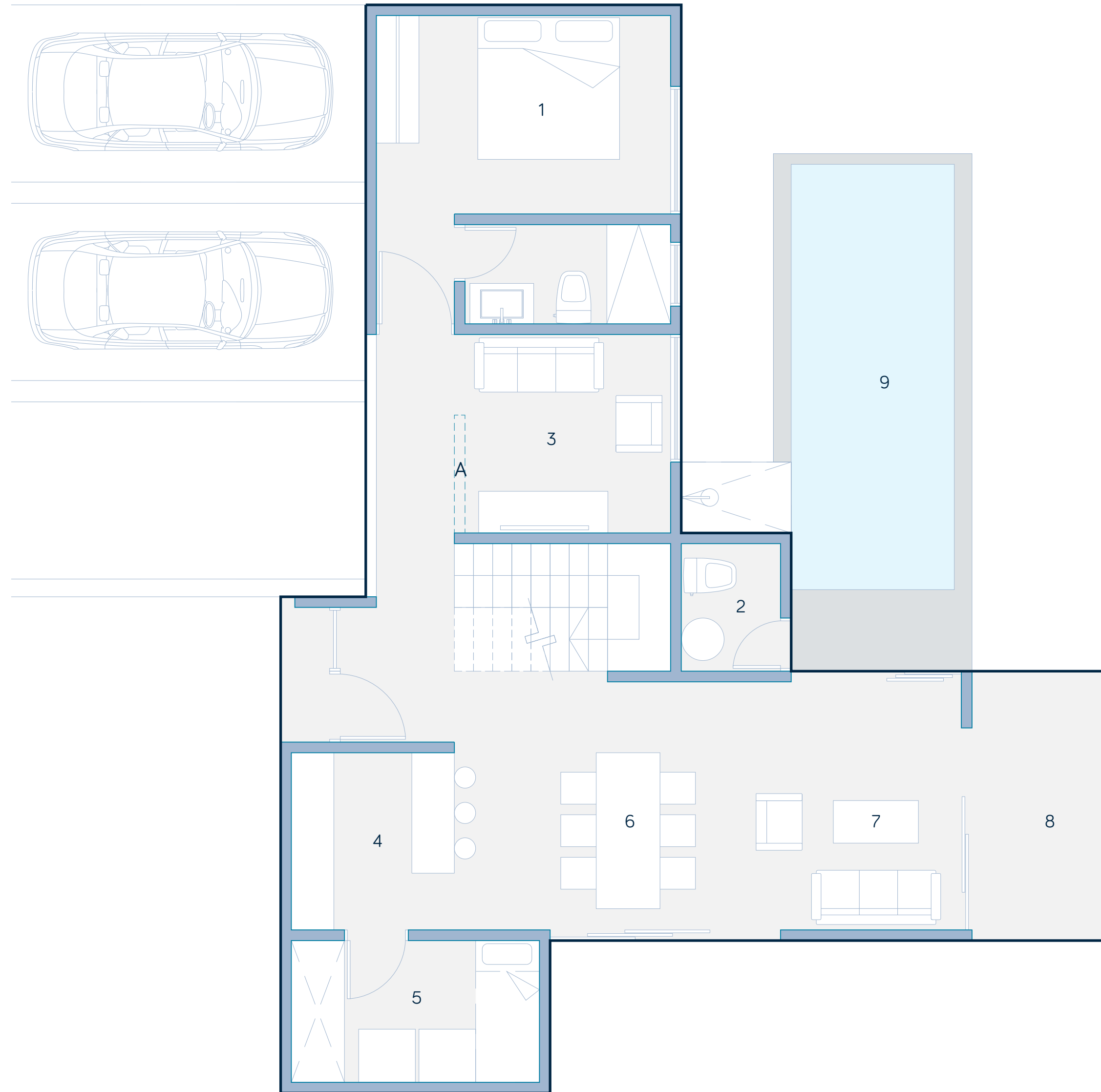




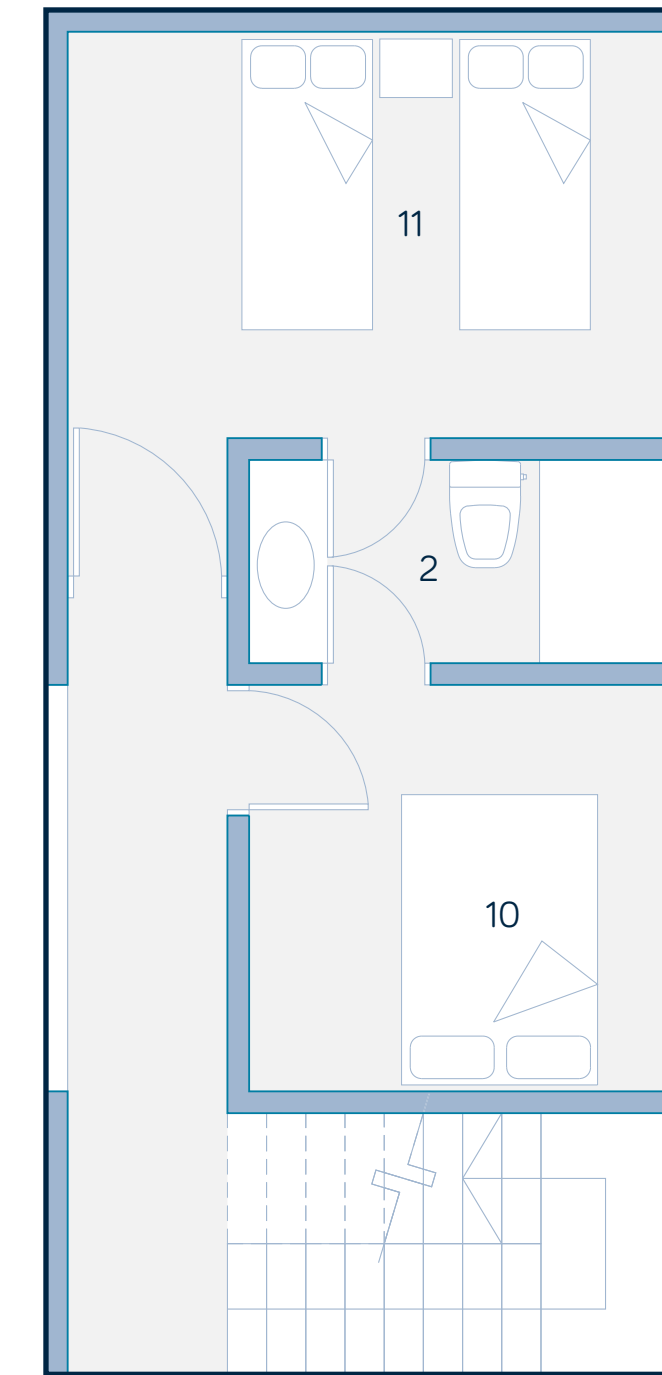
- 1. CUARTO PRINCIPAL
- 2. S.S
- 3. TV ROOM
- 4. COCINA
- 5. SERVICIOS
- 6. COMEDOR
- 7. SALA
- 8. TERRAZA
- 9. PISCINA (extra)
- 10. JUNIOR 1
- 11. JUNIOR 2

- OPCIONAL
- A. ESPACIO FLEX

PRIMER NIVEL



SEGUNDO NIVEL



1349.8 ft²

Model *B*

3 ROOMS

2 FLOORS

2 FULL
BATHROOM

1 ½ BATHROOM

PRIVATE (separate terrace and pool)

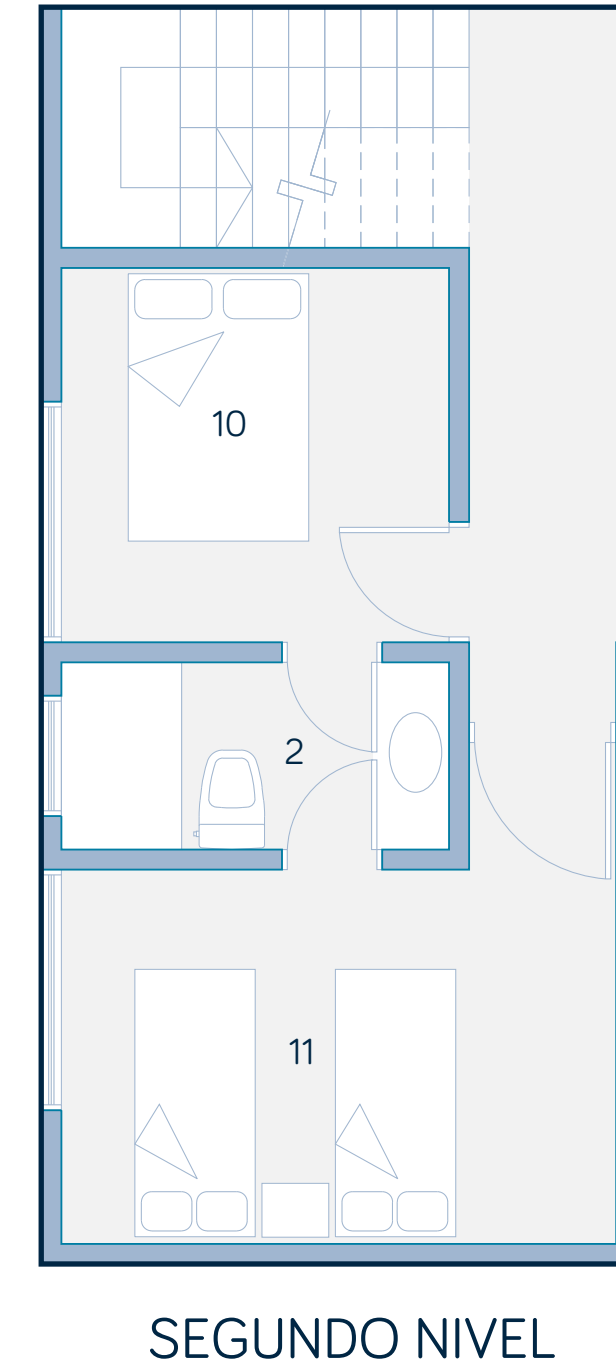
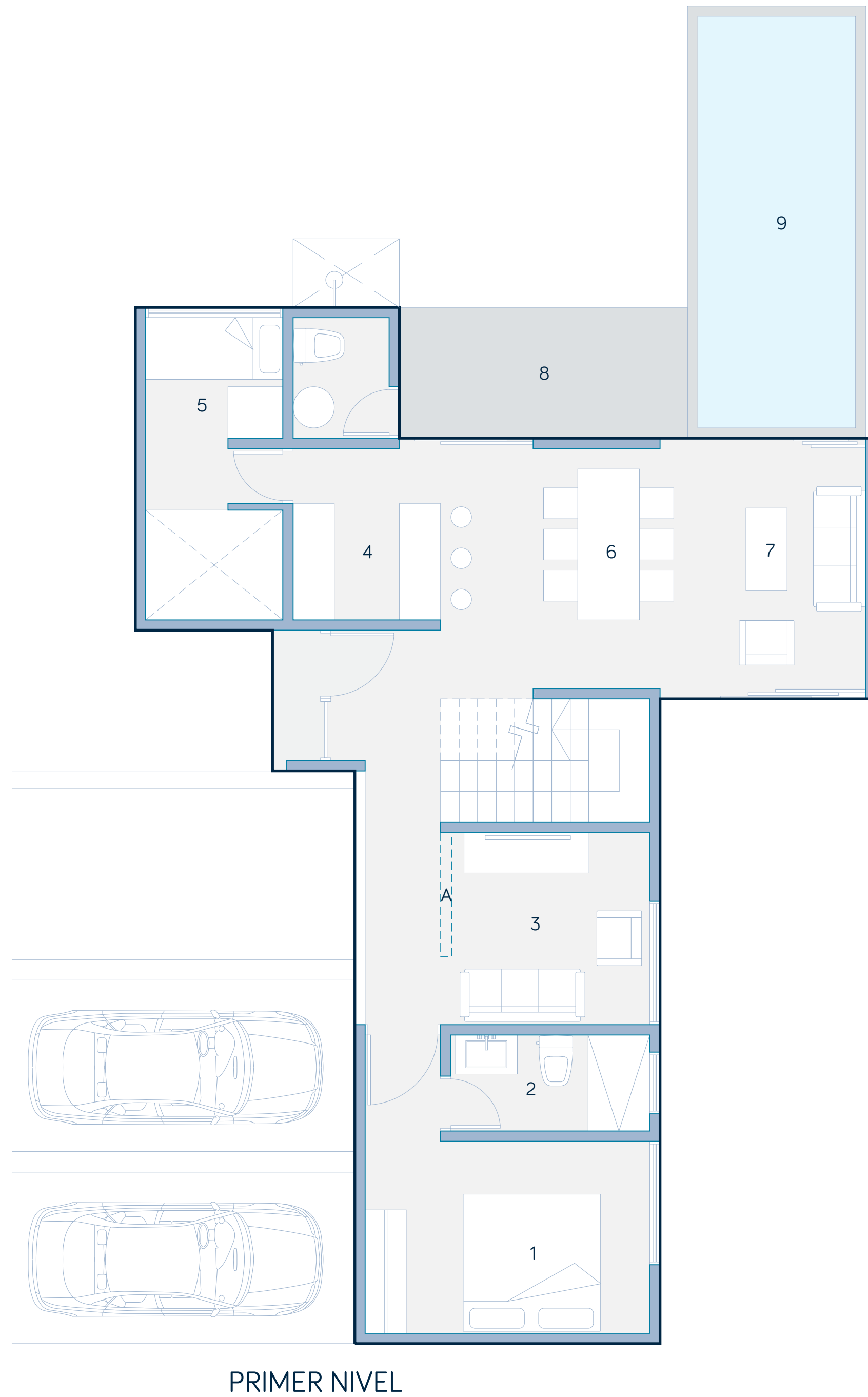
OLAS de Amatecampo • Beach Homes , San Luis Talpa | 2025





- 1. CUARTO PRINCIPAL
- 2. S.S
- 3. TV ROOM
- 4. COCINA
- 5. SERVICIOS
- 6. COMEDOR
- 7. SALA
- 8. TERRAZA
- 9. PISCINA (extra)
- 10. JUNIOR 1
- 11. JUNIOR 2

- OPCIONAL
- A. ESPACIO FLEX



125.54m²
MODELO B

Interior *Visuals*

Model A & B



OLAS

de Amatecampo

• Beach Homes, San Luis Talpa •



*The images shown are for reference only and are subject to change.

OLAS

de Amatecampo

• Beach Homes, San Luis Talpa •



*The images shown are for reference only and are subject to change.



OLAS

de Amatecampo

• Beach Homes, San Luis Talpa •



*The images shown are for reference only and are subject to change.

OLAS

de Amatecampo

• Beach Homes, San Luis Talpa •



*The images shown are for reference only and are subject to change.

OLAS

de Amatecampo

• Beach Homes, San Luis Talpa •



LIVING ROOM WITH TERRACE VIEW
MODEL A

*The images shown are for reference only and are subject to change.

OLAS

de Amatecampo

• Beach Homes, San Luis Talpa •



LIVING ROOM WITH TERRACE VIEW
MODEL B

*The images shown are for reference only and are subject to change.

OLAS

de Amatecampo

Beach Homes, San Luis Talpa



TERRACE & POOL AREA
MODEL B

*The images shown are for reference only and are subject to change.



OLAS de Amatecampo • Beach Homes , San Luis Talpa | 2025

PRIMARY BATHROOM JR

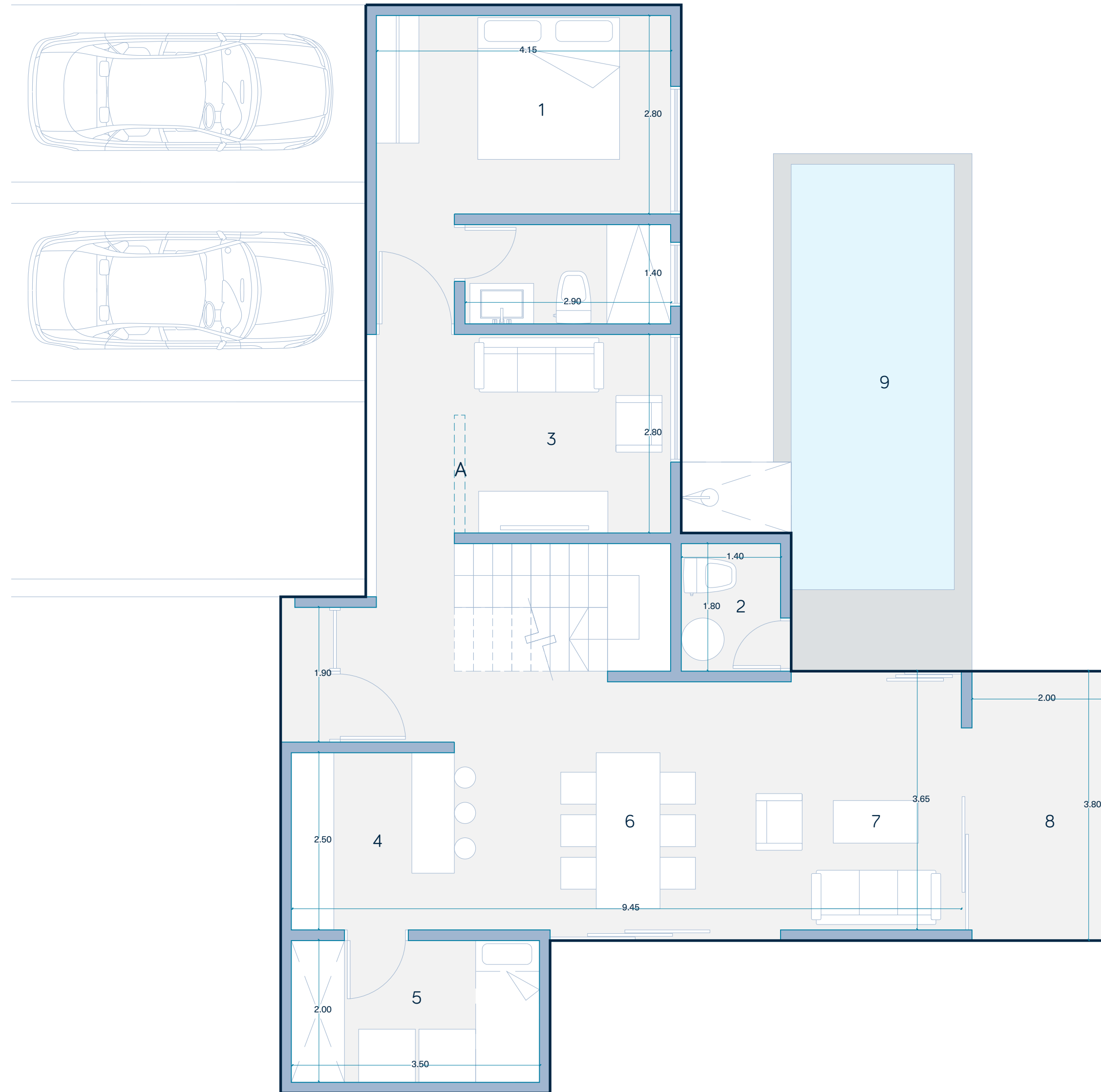
Plantas *Acotadas*



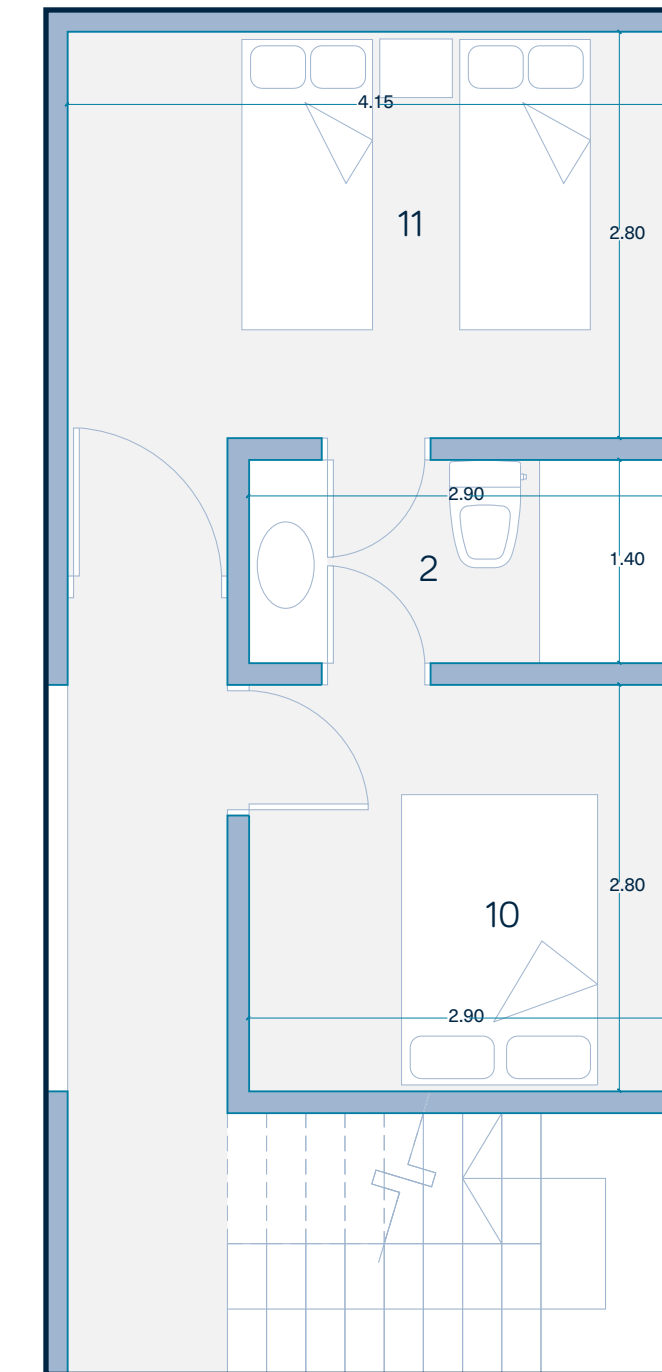
- 1. CUARTO PRINCIPAL
- 2. S.S
- 3. TV ROOM
- 4. COCINA
- 5. SERVICIOS
- 6. COMEDOR
- 7. SALA
- 8. TERRAZA
- 9. PISCINA (extra)
- 10. JUNIOR 1
- 11. JUNIOR 2

- OPCIONAL
- A. ESPACIO FLEX

PRIMER NIVEL



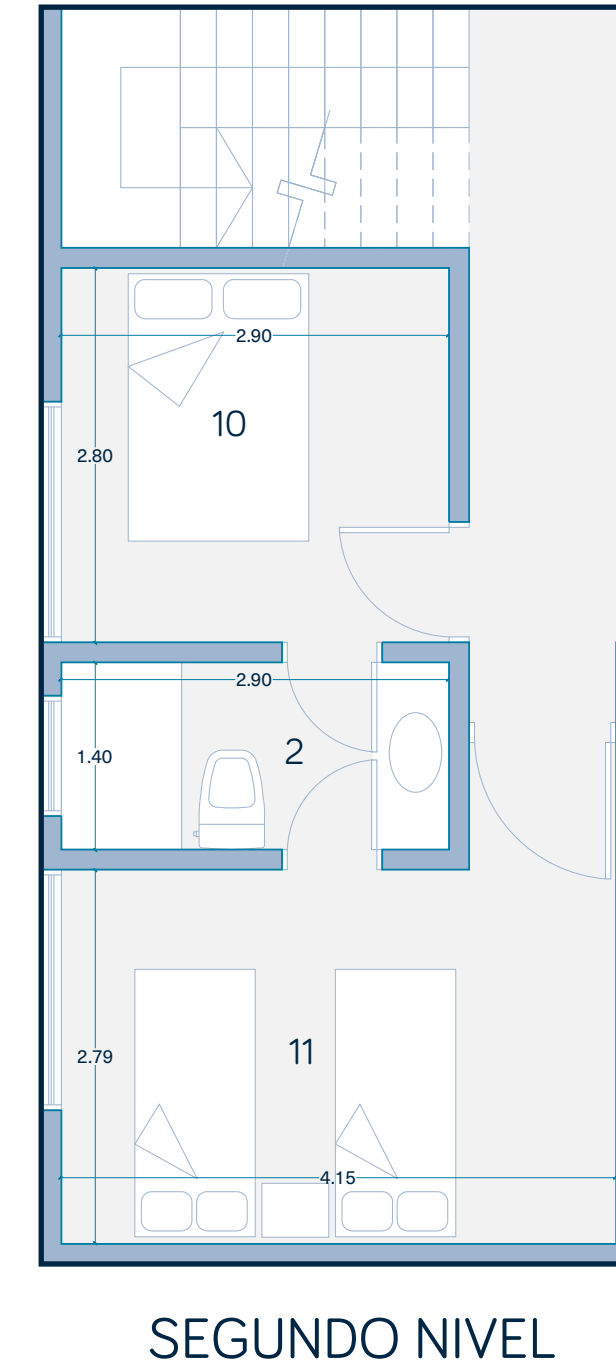
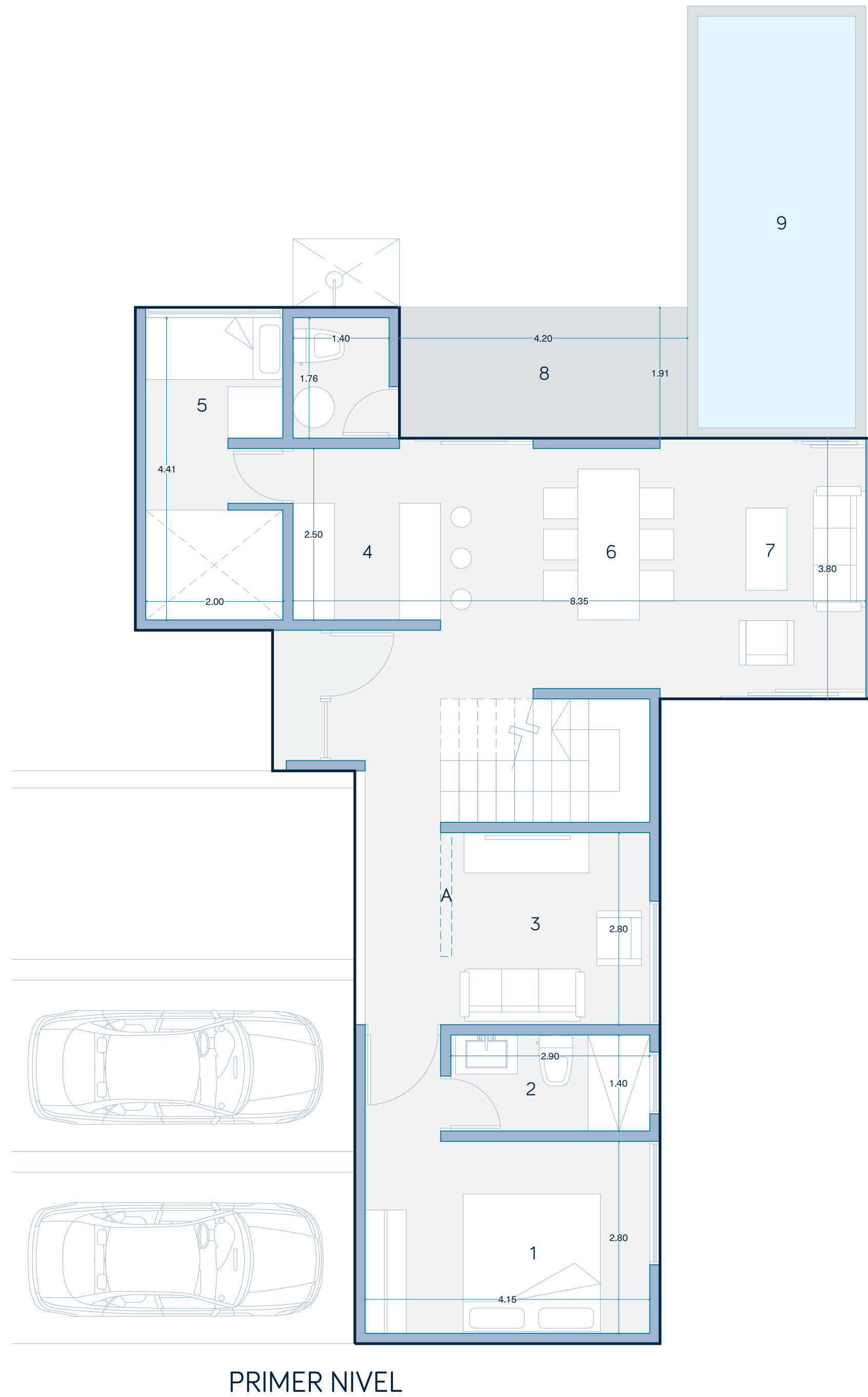
SEGUNDO NIVEL





- 1. CUARTO PRINCIPAL
- 2. S.S
- 3. TV ROOM
- 4. COCINA
- 5. SERVICIOS
- 6. COMEDOR
- 7. SALA
- 8. TERRAZA
- 9. PISCINA (extra)
- 10. JUNIOR 1
- 11. JUNIOR 2

- OPCIONAL
- A. ESPACIO FLEX



125.54m²
MODELO B

Add-ons





TWO-VEHICLE COVERED PERGOLA



TWO-VEHICLE COVERED PERGOLA

*The images shown are for reference only and are subject to change.

OLAS

de Amatecampo

• Beach Homes, San Luis Talpa •



BBQ AREA

*The images shown are for reference only and are subject to change.

Timeline

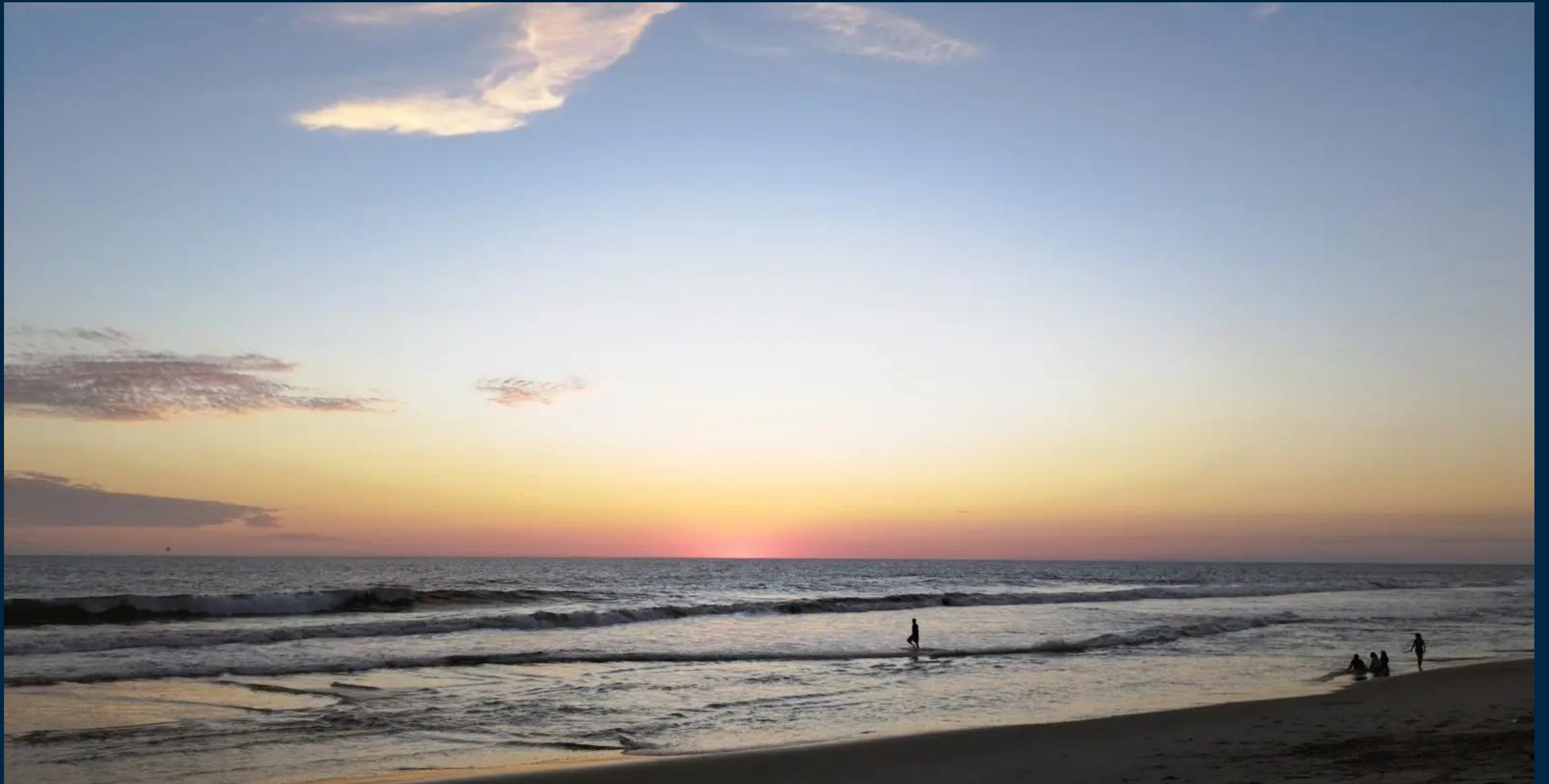


Inspired by life by the sea

Images of the beach and surroundings





OLAS de Amatecampo • Beach Homes , San Luis Talpa | 2025



OLAS de Amatecampo • Beach Homes , San Luis Talpa | 2025

Contact *us*

 (+503) 7860 5981

 (+503) 2264 6160

 contacto@santizorealestate.com

 <https://www.santizorealestate.com/>

